



COMMISSION OF THE EUROPEAN COMMUNITIES

Brussels, 1.8.2002
COM(2002) 446 final

**ANNUAL REPORT FROM THE COMMISSION TO THE COUNCIL AND
THE EUROPEAN PARLIAMENT**

**on the results of the multiannual guidance programmes for the fishing fleets at the
end of 2001**

Contents

Executive Summary.....	3
Introduction	4
Measurement of capacity and effort	4
Fishing vessel register	5
Global results.....	6
Results by Member State.....	10
BELGIUM.....	11
GERMANY	13
DENMARK.....	16
SPAIN.....	18
FINLAND.....	20
FRANCE	22
UNITED KINGDOM.....	29
GREECE.....	35
IRELAND.....	37
ITALY	40
NETHERLANDS	43
PORTUGAL.....	47
SWEDEN	50
Conclusion.....	53

EXECUTIVE SUMMARY

This communication concerns the report to the Council and the European Parliament on the progress of the fourth multiannual guidance programme (MAGP IV) for the fishing fleets. The report is produced each year in accordance with Article 5 of Council Regulation (EC) No 2792/1999.

These annual reports aim to ensure the transparent implementation of the MAGP IV, which fixes fleet capacity and fishing effort targets that must be achieved progressively over the period 1 January 1997 to 31 December 2001. This year's report is on the progress of the programmes at the end of 2001.

Using the data from the Community register of fishing vessels employed at the time of drafting this document and the reports submitted to the Commission by the national authorities, it summarises the evolution of the tonnage and power of the fleets in comparison with the intermediate and final targets of the MAGP IV. The data contained in the report are entirely factual.

During the first five years of the MAGP IV, the Community fleet was reduced by 38 078 GT and 460 042 kW, which represent reductions in fleet capacity of approximately 1.9% and 5.9% respectively. At 31 December 2001, due to the good results of former programmes the Community fleet had over-fulfilled its targets, at 16% more than the final MAGP IV targets in terms of tonnage and 12% in terms of power.

The degree to which the MAGP targets have been achieved varies greatly from Member State to Member State, as shown by the tables on pages 7 and 8.

Without taking into account the results expressed in terms of tonnage in units of gross tonnes (GT), which involve a certain degree of uncertainty in view of the ongoing fleet remeasurement (see page 4), the results based on capacity and power are as follows:

- all Member States apart from the Netherlands have met their global targets at the end of 2001;
- however, only Denmark, Spain, Portugal and Finland have met their targets in all segments of their fleets.

INTRODUCTION

For each Member State in the Community, a multiannual guidance programme (MAGP) fixes targets for reducing the size of the fishing fleet in order to bring fishing effort into line with available resources. The fourth generation of MAGPs, adopted in December 1997¹, fix targets for the period 1997-2001. This period was extended to the end of 2002 by Council Decision².

Article 5 of Council Regulation (EC) No 2792/1999³, concerning the new Financial Instrument for Fisheries Guidance, requires the Member States to submit to the Commission, before 1 May each year, a report on the situation of their fleets at the end of the preceding year with respect to their MAGP targets. Using these reports and data from the fishing vessel register, the Commission should produce its own report to the Council and the European Parliament within three months of the 1 May deadline.

This report is the fourth in the series on the results of the fourth generation of programmes (MAGP IV)⁴.

MEASUREMENT OF CAPACITY AND EFFORT

For the purposes of the MAGP, the capacity of a vessel is defined as its tonnage in gross tonnes (GT) and its propulsion power in kW. The fishing effort is defined as the product of capacity and the number of days spent at sea. There are therefore two measures of effort, one in GT days and the other in kW days.

Remeasurement of tonnage

The tonnage targets of the MAGP III (1992 - 1996) were expressed in gross registered tonnes (GRT), while in almost all Member States a mixture of tonnage measurements were used to measure capacity, some vessels being measured in GRT, others in GT and others in nationally defined units of tonnage.

Council Regulation (EC) No 3259/94⁵ and Commission Decision 95/84/EC⁶ were adopted in order to harmonise tonnage measurements, requiring that all fishing vessels be measured in GT. They also simplify the definition of GT for vessels less than 15 metres in length overall and specify formulae to estimate the GT of vessels between 15 and 24 metres length while awaiting full remeasurement.

As agreed with the Member States, the tonnage targets were converted to units of GT when the MAGP IV was adopted. However, some Member States had made little progress in remeasuring their fleets at the time of adoption, so the targets, although nominally in units of GT, remained a mixture of GT, estimates of GT, GRT and national units.

¹ Commission Decisions 98/119/EC to 98/131/EC (OJ L 39, 12.2.1998, pp. 1-84).

² OJ L 31, 1.2.2002, p. 77.

³ OJ L 337, 30.12.1999, p. 10.

⁴ COM(1999) 175 final, COM(2000) 738 final, COM(2001) 541 final.

⁵ OJ L 339, 29.12.1994, p. 11.

⁶ OJ L 67, 25.3.1995, p. 33.

Member States have until the end of 2003 to complete the remeasurement of their fleets in units of GT. As this remeasurement progresses, the estimates of GT are being replaced by real values in the fishing vessel register. This inevitably alters the comparability of the situation and the targets that were fixed for tonnage. Strictly speaking the tonnage targets should be recalculated every time a vessel is remeasured. However, for practical reasons formal revision of the targets is only carried out periodically. In the meantime there will always be some degree of uncertainty when comparing the situation of the fleet with the tonnage targets.

Cumulative fishing effort targets

For those Member States that have opted to adjust activity instead of capacity to meet the targets, the cumulative fishing effort targets are shown in this report. In the MAGP decisions published in the *Official Journal*, only the fishing effort targets at the start and at the end of the period are shown. These are used to calculate the cumulative targets in the following way. Since cumulative fishing effort targets should be identical whether it is capacity or activity that is reduced over the period of the programme, a curve was drawn of the continuous decrease in capacity over the period 1 January 1996 - 31 December 2001 necessary to meet each of the intermediate targets expressed purely in terms of capacity. The area under this curve was then multiplied by the baseline level of activity expressed in days per year, to arrive at the cumulative fishing effort over the period.

FISHING VESSEL REGISTER

The multiannual guidance programmes are monitored using the declarations to the fishing vessel register of the Community. The register contains information on the physical characteristics of all the approximately 100,000 commercial marine fishing vessels in the EU fleets, together with information on the MAGP segment to which each vessel belongs and the fishing gears that are installed. It is intended to provide the reference data on the fleet for all aspects of the common fisheries policy.

In previous reports on the results of the MAGP, large discrepancies were sometimes noted between the information contained in the fishing vessel register and data supplied by the Member States in their annual national reports. One of the reasons for these discrepancies was that the declarations from the Member States were screened for errors before being accepted into the database. A rejected or suspect declaration was returned to the Member State for correction or checking. This was intended to ensure the reliability of the register, but in practise often led to a divergence between the data in the national registers and those in the Community register.

These procedures have now been changed. Member States now have direct access to their own data in the Community fishing vessel register via the Internet using the FRONT (Fleet Register on the Net) application. This means that the national authorities can make immediate corrections if the data in the Community register begin to diverge from those in the national database. In view of this, the capacity figures used in this report are based on the information entered in the Community fishing vessel register, with the exception of Ireland and the Netherlands. These two countries have provided their own data for this report, as technical problems experienced by their administrations in 2001 meant that the situation of their fleets could not be properly maintained in our database.

However some inconsistencies can still be found in the fishing vessel register information. The most important of these is the fact that some vessels do not have a valid MAGP segment code. In the tables that follow these vessels have been included as unclassified. The Commission staff are working in cooperation with the Member States concerned to rectify this.

GLOBAL RESULTS

The table *Total Community Fleet by Member State* shows the percentage change in tonnage and power over the period 1 January 1997 - 31 December 2001. However, it should be noted that in the case of tonnage this figure may underestimate the real percentage change due to the ongoing remeasurement of vessels in units of GT during that period.

The * placed next to the tonnage heading (GT*) indicates that the totals underneath are calculated mixing GT and GRT values. In order to find the total, the GT value is taken first, whether it is the measured value or an estimate. When GT is not available the GRT value is used.

(a) Compliance with capacity target

The following table summarises the evolution of the entire Community fleet since the start of the MAGP IV. The shaded columns indicate the Member States that have not met the targets laid down by the end of 2001.

Since 1 January 1997 the fleet has been reduced by approximately 5.9% in power. In tonnage, the difference would appear to be 1.9% but this value remains indefinite until the fleet remeasuring has been finalised.

The Community fleet has therefore done better than the capacity targets fixed for 31 December 2001⁷.

⁷ New targets will be fixed by Council Decision for the end of 2002.

Total Community Fleet by Member State

Code - Country	GT*					kW				
	Situation 1.1.1997	Situation 31.12.2001	Change in tonnage capacity 1997-2001	Objectives 31.12.2001	Sit. 2001/ Obj. 2001	Situation 1.1.1997	Situation 31.12.2001	Change in power capacity 1997-2001	Objectives 31.12.2001	Sit. 2001/ Obj. 2001
BEL Belgium	22.527	24.091	6,9%	23.323	103,3%	63.540	66.347	4,4%	67.857	97,8%
DEU Germany	70.161	68.766	-2,0%	81.973	83,9%	161.899	160.562	-0,8%	170.050	94,4%
DNK Denmark	97.812	99.663	1,9%	132.539	75,2%	393.183	364.030	-7,4%	463.437	78,6%
ESP Spain	603.553	532.003	-11,9%	799.254	66,6%	1.538.065	1.311.821	-14,7%	1.802.836	72,8%
FIN Finland	23.341	19.748	-15,4%	23.427	84,3%	218.379	191.344	-12,4%	217.634	87,9%
FRA France	198.026(*)	229.742	16%	213.870	107,4%	988.087	1.098.253	11,1%	1.161.131	94,6%
GBR United Kingdom	251.256	255.634	1,7%	250.684	102%	1.050.890	953.733	-9,2%	1.066.463	89,4%
GRC Greece	110.848	108.739	-1,9%	120.755	90%	671.872	637.207	-5,2%	654.172	97,4%
IRL Ireland	60.264	64.412	6,9%	69.649	92,5%	189.847	185.276	-2,4%	199.009	93,1%
ITA Italy	249.650	217.501	-12,9%	230.177	94,5%	1.491.983	1.315.086	-11,9%	1.341.775	98%
NLD Netherlands	144.709	179.942	24,3%	145.520	123,7%	399.870	426.867	6,8%	423.161	100,9%
PRT Portugal	123.500	116.968	-5,3%	195.885	59,7%	393.199	403.245	2,6%	497.246	81,1%
SWE Sweden	49.822	50.183	0,7%	51.159	98,1%	256.303	243.302	-5,1%	261.856	92,9%
EC total	2.005.469	1.967.391	-1,9%	2.338.215	84,1%	7.817.117	7.357.075	-5,9%	8.326.627	88,4%

Bold type indicates that the targets have not been met. It should be noted that the tonnage targets have not been revised to take into account the effects of remeasurement in units of GT, so the comparisons between the situation and the targets are uncertain.

The shaded countries are those for which the targets have not been met. France and the United Kingdom meet their targets if the impact of fleet remeasurement (a process nearing finalisation) is taken into account.

(*) The vessels based in the French overseas departments (representing about 17 000 GT and 100 000 kW) have not been included in this table since the figures for the situation of this part of the French fleet for 1 January 1997 are not available.

(b) Compliance with effort targets

Six Member States chose to achieve their MAGP IV targets by managing activity as well as capacity in one or more segments of their fleets. In order to do this the Member States were obliged to define one or more fisheries in each of the segments concerned. Fishing effort **targets** were then defined for each of these fisheries. All of the fishing effort exerted by vessels in the segment must be accounted for in this way; all fishing effort in a segment must correspond to one of the fisheries that have been defined.

Unlike capacity, fishing effort cannot be measured for a particular point in time. The effort targets are therefore cumulative over the period of the programme. The following table shows the effort exerted in each of the fisheries from 1 January 1997 until 31 December 2001 compared with the cumulative effort targets for the end of 2001. The last two columns in this table show the extent to which the targets have been met. Where the targets have been exceeded, this is shown in bold.

Summary of compliance with capacity targets by segment

Member State	Number of segments in which the targets have been achieved against total number of segments		Number of fisheries in which the targets have been achieved against total number of fisheries
	GT	kW	KW
Belgium	1/2	1/2	-
Germany	6/7	6/7	2/2
Denmark	4/4	4/4	-
Spain	7/7	7/7	-
Finland	4/4	4/4	-
France	15/21	19/21	5/5
United Kingdom	6/8	7/8	7/8
Greece	5/6	5/6	-
Ireland	2/3	2/3	2/2
Italy	8/11	7/11	-
Netherlands	5/7	4/7	3/4
Portugal	10/10	10/10	-
Sweden	4/6	5/6	1/1

The shaded countries are those for which the targets have not been met in certain segments/fisheries.

Compliance with effort targets

Country	Segment code	Fishery	Cumulative effort to end 2001		Cumulative effort target to end 2001		Cumulative effort/ cumulative target	
			GT days	kW days	GT days	kW days	GT days	kW days
Germany	4C4	F1	1651	5572	2501	7352	66%	75,8%
	4C6	F1	12883	9251	21912	15539	58,8%	59,5%
United Kingdom	4N2	F1	6647	10389	7576	17530	87,7%	59,3%
		F2	21604	34741	23610	54624	91,5%	63,6%
		F3	1326	2043	2850	5180	46,5%	39,4%
		F4	2731	3790	2300	3220	118,7%	117,7%
	4N3	F1	18332	70642	18409	71682	99,6%	98,5%
		F2	9822	34477	10125	35013	97%	98,5%
	4N4	F1	137924	394476	137325	463158	100,4%	85,2%
	4N8	F1	7983	11254	14037	21837	56,9%	51,5%
France	4F3	F1	42.566	107.748	55096	115096	77,3%	93,6%
	4F6	F1	8.313	11.798	9944	12241	83,6%	96,4%
	4F8	F1	8.026	44.849	9190	53365	87,3%	84%
	4F9	F1	3.602	18.584	3611	21509	99,8%	86,4%
		F2	202	1.542	530	3128	38,1%	49,3%
Ireland	4G2	F1	20790	35940	29369	36241	70,8%	99,2%
	4G3	F1	1117	5232	1578	8551	70,8%	61,2%
Netherlands	4J2	F1	109953	124734	63019	88901	174,5%	140,3%
	4J3	F1	65478	255299	64694	264386	101,2%	96,6%
	4J4	F1	8134	21786	12104	36987	67,2%	58,9%
	4J5	F1	0	9	34	371	0%	26,5%
Sweden	4M4	F1	10118	39909	10120	42264	100%	94,4%

units in '000 GT days and '000 kW days

Bold italic type indicates that the targets have not been met.

RESULTS BY MEMBER STATE

The following tables and charts summarise the results of the MAGP IV at the end of 2001 for each of the Member States.

The table under point (a), “situation of the fleet”, shows the capacity *targets* for the end of 2001 compared to the situation of the fleet according to the fishing vessel register on that date.

The two charts under point (b), “fleet evolution”, show the evolution of the total capacity of the fleet for each Member State since the beginning of MAGP IV.

The table under point (c), “fishing effort”, gives the fishing effort by segment. The information in this table is the information provided by the Member States in their national reports. Where fisheries are identified within segments (the shaded rows labelled F1, F2 etc.), the *targets* for the segment are expressed in terms of fishing effort in the MAGP IV Decision, so activity limitations contribute to the achievement of the *targets*.

Finally, under point (d), “cumulative fishing effort”, the table shows the cumulative intermediate fishing effort *targets* for each of the segments and fisheries in which the *targets* are expressed in terms of fishing effort. The charts following this table compare the cumulative fishing effort declared by the Member States (white bars) with the cumulative intermediate effort *targets* under the MAGP IV (shaded bars).

BELGIUM

(a) Situation of the fleet

Belgium

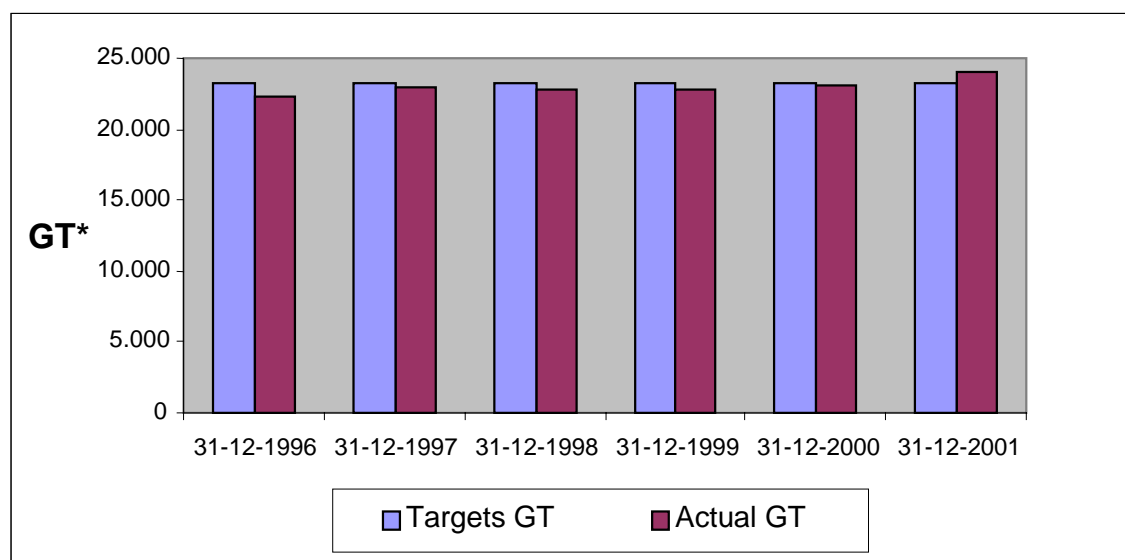
Segment	Description	Number of vessels	Situation 31.12.2001		Objective 31.12.2001		% Situation / Objective 31.12.2001	
			GT*	kW	GT*	kW	GT*	kW
4A1	Beam trawlers	123	23.075	64.173	22.008	63.987	104,8%	100,3%
4A2	Demersal trawlers	7	1.016	2.174	1.315	3.870	77,3%	56,2%
	TOTAL	130	24.091	66.347	23.323	67.857	103,3%	97,8%

Bold italic type indicates that the targets have not been met. It should be noted that the tonnage targets have not been revised to take into account the remeasurement in units of GT, so the comparisons between the situation and the targets are uncertain.

(b) Fleet evolution

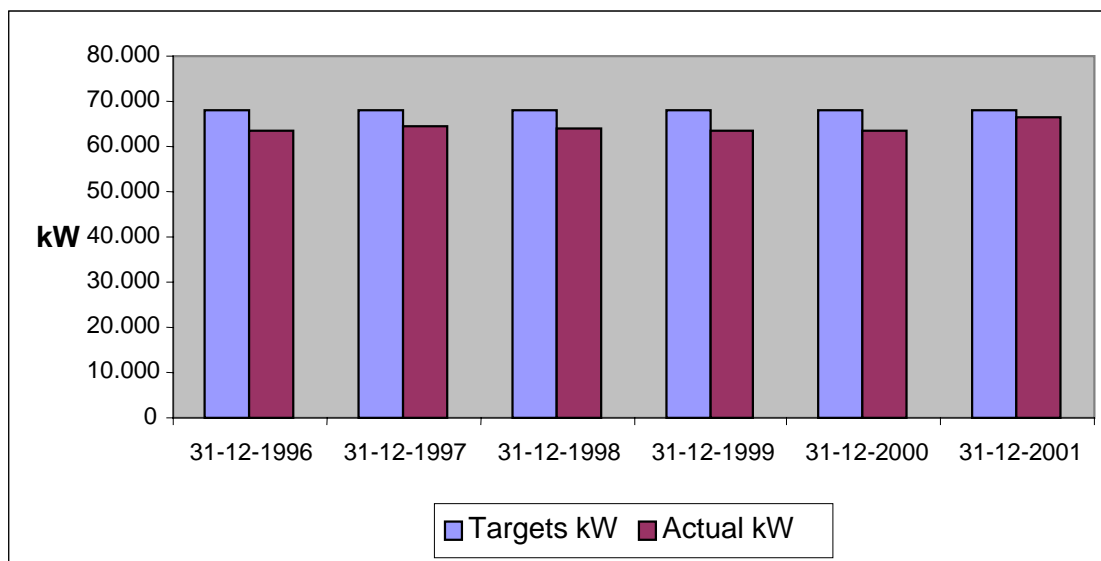
Evolution of global fleet capacity in GT compared to targets.*

Belgium



Evolution of global fleet capacity in kW compared to targets.

Belgium



(c) Fishing effort

No fishing effort data were provided. Belgium does not comply with Article 3 of Commission Regulation (EC) No 2091/98⁸.

⁸ OJ L 266, 1.10.1998, p. 36.

GERMANY

(a) Situation of the fleet

Germany

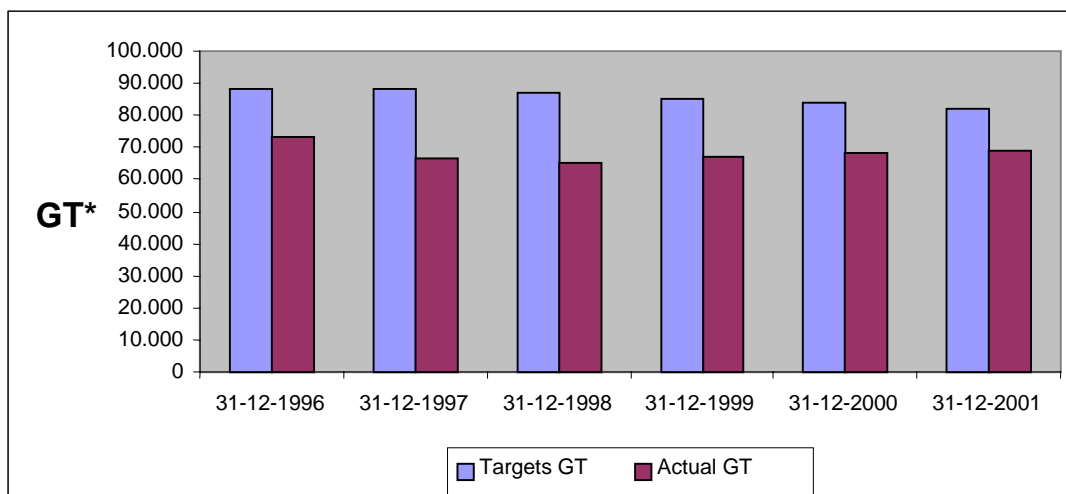
Segment	Description	Number of vessels	Situation 31.12.2001		Objective 31.12.2001		% Situation / Objective 31.12.2001	
			GT*	kW	GT*	kW	GT*	kW
4C1	Small-scale coastal fishing vessels <12 m	1.721	3.891	30.673	4.827	31.433	80,6%	97,6%
4C2	Passive gear > 12 m	25	1.738	4.995	2.057	5.834	84,5%	85,6%
4C3	Trawlers	130	9.579	31.403	11.809	32.200	81,1%	97,5%
4C4	Beam trawlers	6	1.485	5.199	2.263	6.759	65,6%	76,9%
4C5	Beam trawlers (list I and II)	296	12.517	49.795	10.821	47.585	115,7%	104,6%
4C6	Pelagic trawlers	3	18.105	12.841	18.356	12.841	98,6%	100,0%
4C7	Trawlers	10	21.451	25.656	31.840	33.397	67,4%	76,8%
	TOTAL	2.191	68.766	160.562	81.973	170.049	83,9%	94,4%

Bold italic type indicates that the targets have not been met. It should be noted that the tonnage targets have not been revised to take into account the remeasurement in units of GT, so the comparisons between the situation and the targets are uncertain.

(b) Fleet evolution

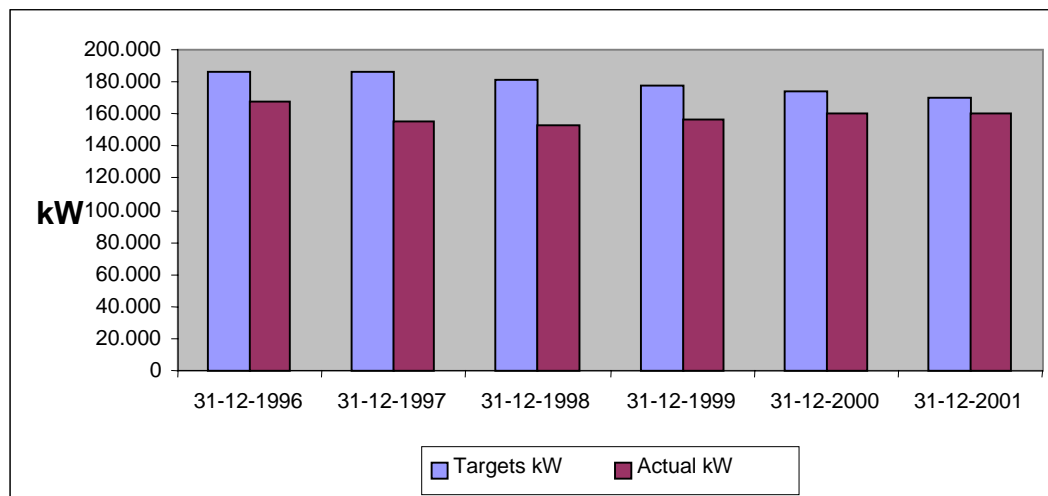
Evolution of global fleet capacity in GT compared to targets.*

Germany



Evolution of global fleet capacity in kW compared to targets.

Germany



(c) Fishing effort

Germany operates fishing effort regimes in two segments of the fleet, the beam trawlers operating in the North Sea (4C4) and the pelagic trawlers (4C6). Germany manages the fishing effort in these two segments by allocating days at sea to individual vessels in the case of beam trawlers and by limiting the aggregate effort of the pelagic trawlers.

Germany

Segment code	Fishery	1997		1998		1999		2000		2001	
		GT days	kW days	GT days	kW days	GT days	kW days	GT days	kW days	GT days	kW days
4C1				540	3.934	555	4.057	524	3.932	531	4.110
4C2				359	1.116	416	1.084	461	1.198	322	895
4C3				2.419	6.871	1.941	6.032	1.801	5.570	1.770	5.500
4C4	F1	564	1.658	271	979	262	945	272	997	281	993
4C5				1.684	7.131	2.260	8.475	2.384	9.006	2.377	8.748
4C6	F1	4.684	3.336	1.502	1.161	1.838	1.373	2.200	1.488	2.659	1.891
4C7				5.577	7.469	5.991	7.419	4.962	5.832	4.542	5.626

units in '000 GT days and '000 kW days

(d) Cumulative fishing effort for segments subject to a system for the management of fishing effort

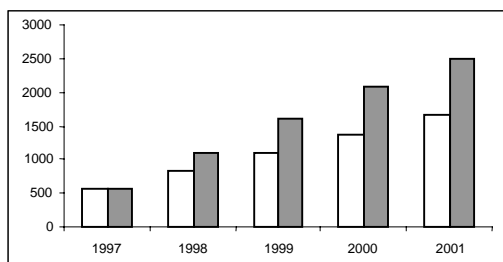
Germany

Segment code	Fishery	End 1997		End 1998		End 1999		End 2000		End 2001	
		GT –	kW –	GT –	kW –	GT –	kW –	GT –	kW –	GT –	kW –
		days	days	days	days	days	days	days	days	days	days
4C4	F1	564	1.658	835	2.637	1.097	3.582	1.369	4.579	1.651	5.572
4C6	F1	4.684	3.336	6.186	4.497	8.024	5.871	10.224	7.359	12.883	9.251

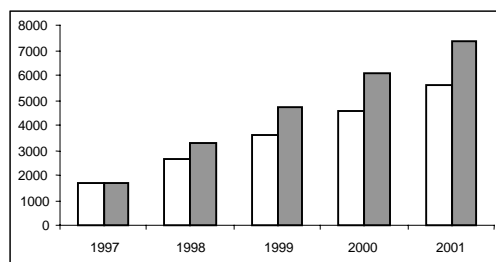
units in '000 GT days and '000 kW days

4C4 Beam trawlers

GT days ('000)

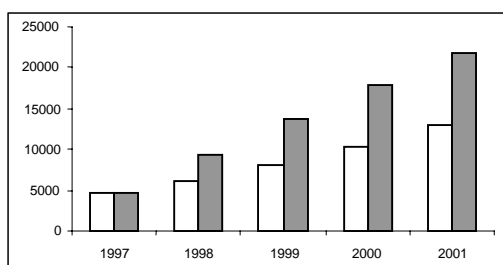


kW days ('000)

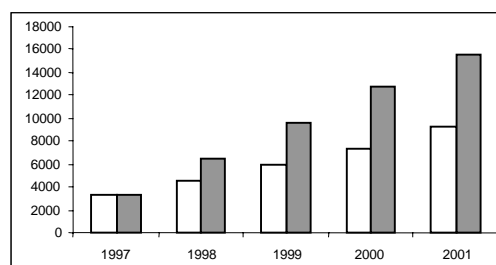


4C6 Pelagic trawlers

GT days ('000)



kW days ('000)



DENMARK

(a) Situation of the fleet

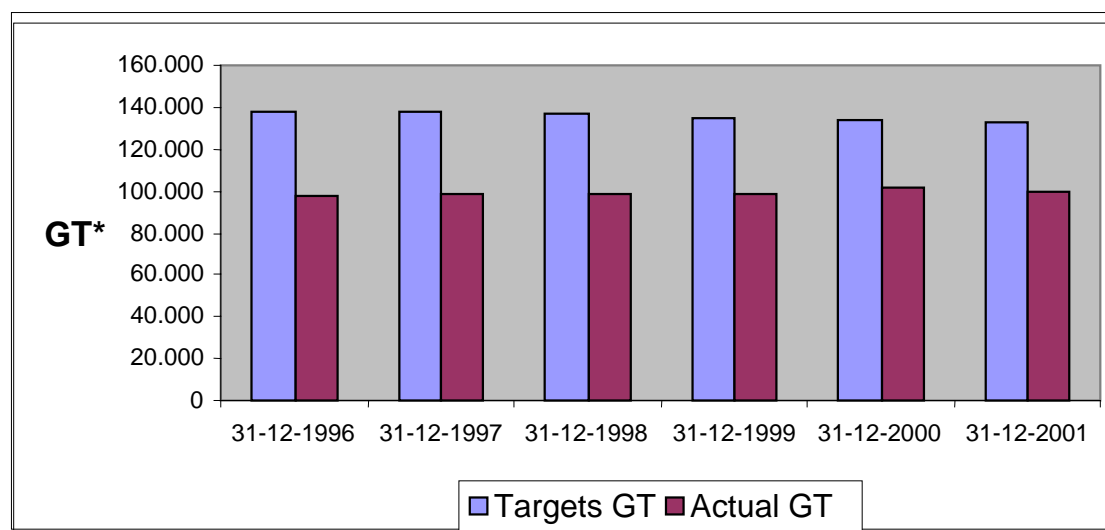
Denmark

Segment	Description	Number of vessels	Situation 31.12.2001		Objective 31.12.2001		% Situation / Objective 31.12.2001	
			GT*	kW	GT*	kW	GT*	kW
4B1	Small-scale coastal fishing vessels <12 m	2.789	7.584	67.730	11.387	92.429	66,6%	73,3%
4B2	Netters	181	5.464	29.083	8.981	36.704	60,8%	79,2%
4B3	Trawlers and seiners (Danish seine)	994	74.546	240.119	100.500	312.101	74,2%	76,9%
4B4	Purse seiners and pelagic trawlers	10	7.872	14.974	11.672	22.203	67,4%	67,4%
NC	Unclassified	73	4.196	12.124				
	TOTAL	4.047	99.662	364.030	132.540	463.437	75,2%	78,6%

b) Evolution of the fleet

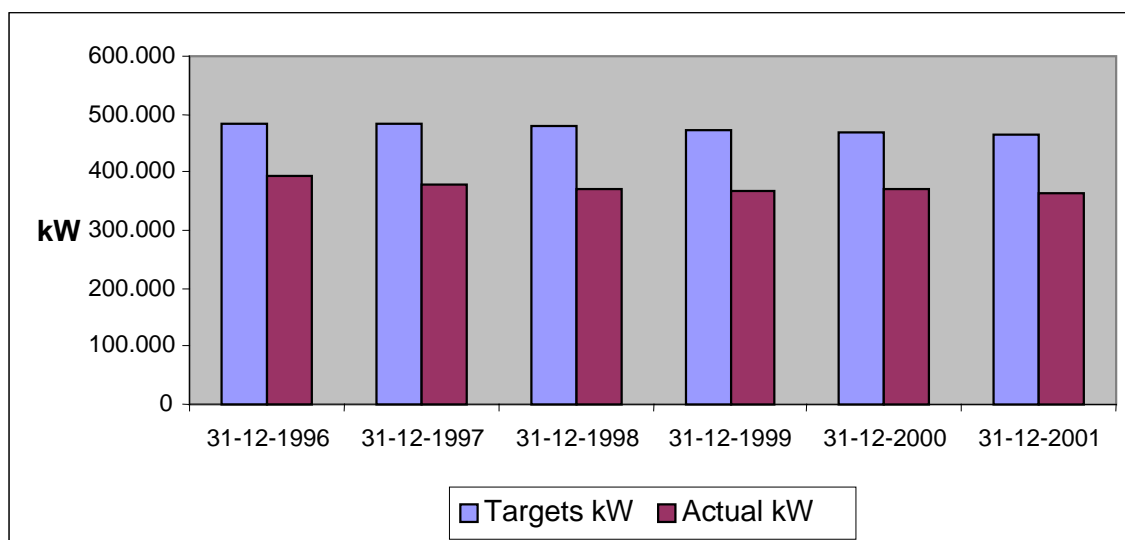
Evolution of global fleet capacity in GT* compared to targets.

Denmark



Evolution of global fleet capacity in kW compared to targets.

Denmark



(c) Fishing effort

Denmark

Segment code	1997		1998		1999		2000		2001	
	GT days	kW days	GT days	kW days	GT days	kW days	GT days	kW days	GT days	kW days
4B1	456	4.040	426	3.811	452	4.132	451	4.191	447	4.185
4B2	1.328	5.417	1.234	5.021	1.250	4.976	1.163	4.612	1.194	4.749
4B3	17.471	52.198	17.603	51.390	18.408	53.572	19.070	54.964	19.265	55.417
4B4	1.480	2.845	1.571	2.936	1.583	3.003	1.801	3.405	1.519	2.848

units in '000 GT days and '000 kW days

SPAIN

(a) Situation of the fleet

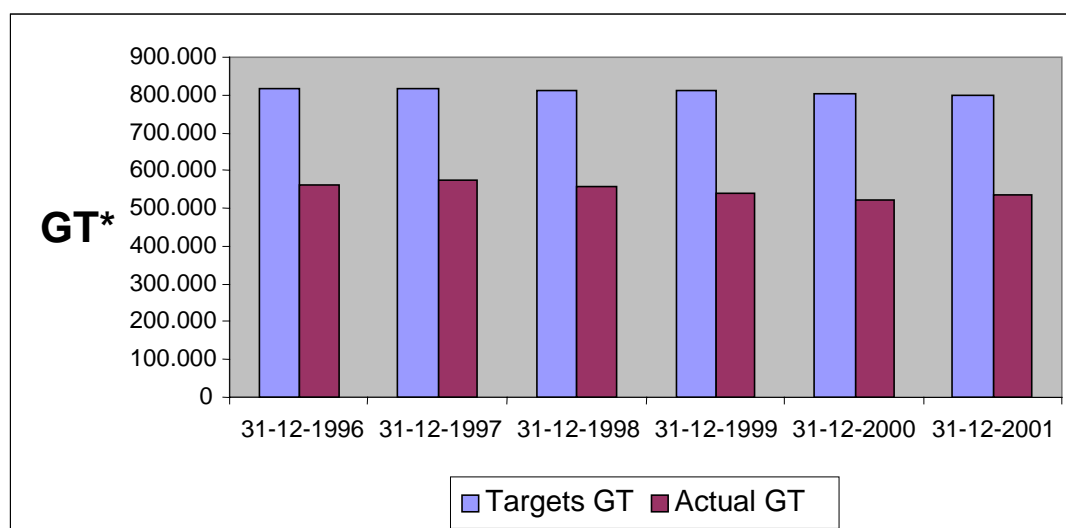
Spain

Segment	Description	Number of vessels	Situation 31.12.2001		Objective 31.12.2001		% Situation / Objective 31.12.2001	
			GT*	kW	GT*	kW	GT*	kW
4E1	Artisanal <12 m	10.904	20.676	177.181	33.293	283.196	62,1%	62,6%
4E2	Trawlers	1.918	130.988	359.904	163.114	423.621	80,3%	85,0%
4E3	Fixed gear	1.090	51.096	147.339	58.776	148.967	86,9%	98,9%
4E4	Purse seiners	797	47.189	171.495	57.341	173.376	82,3%	98,9%
4E5	Trawl and mobile gear	432	153.638	252.334	334.595	517.173	45,9%	48,8%
4E6	Fixed gear	295	52.440	91.584	56.642	118.370	92,6%	77,4%
4E7	Tuna fleet	39	75.976	111.984	95.493	138.133	79,6%	81,1%
	TOTAL	15.475	532.003	1.311.821	799.254	1.802.836	66,6%	72,8%

(b) Fleet evolution

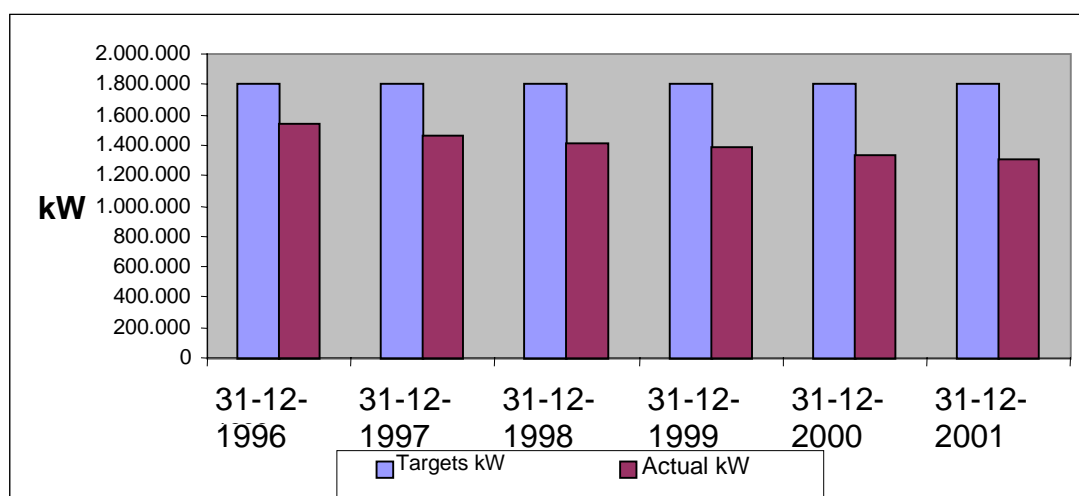
Evolution of global fleet capacity in GT* compared to targets.

Spain



Evolution of global fleet capacity in kW compared to targets.

Spain



(c) Fishing effort

Spain

Segment code	1997		1998		1999		2000		2001	
	GT days	kW days	GT days	kW days	GT days	kW days	GT days	kW days	GT days	kW days
4E1	8.637	74.667	8.508	73.067	8.359	70.617	8.060	68.087	7.500	63.694
4E2	38.475	109.403	38.128	105.555	36.685	104.457	35.205	98.675	36.368	97.948
4E3	17.405	48.276	15.292	42.339	16.055	46.477	14.671	43.085	15.862	45.300
4E4	13.501	45.284	13.585	45.960	11.996	44.767	12.140	44.487	12.110	43.936
4E5	62.226	105.967	52.313	87.979	49.814	81.379	33.652	47.388	34.867	49.089
4E6	17.620	35.365	16.494	30.647	17.735	33.949	14.762	26.078	14.551	23.668
4E7	27.628	41.625	27.746	41.626	28.320	42.279	27.731	40.889	27.731	40.888

units in '000 GT days and '000 kW days

FINLAND

(a) Situation of the fleet

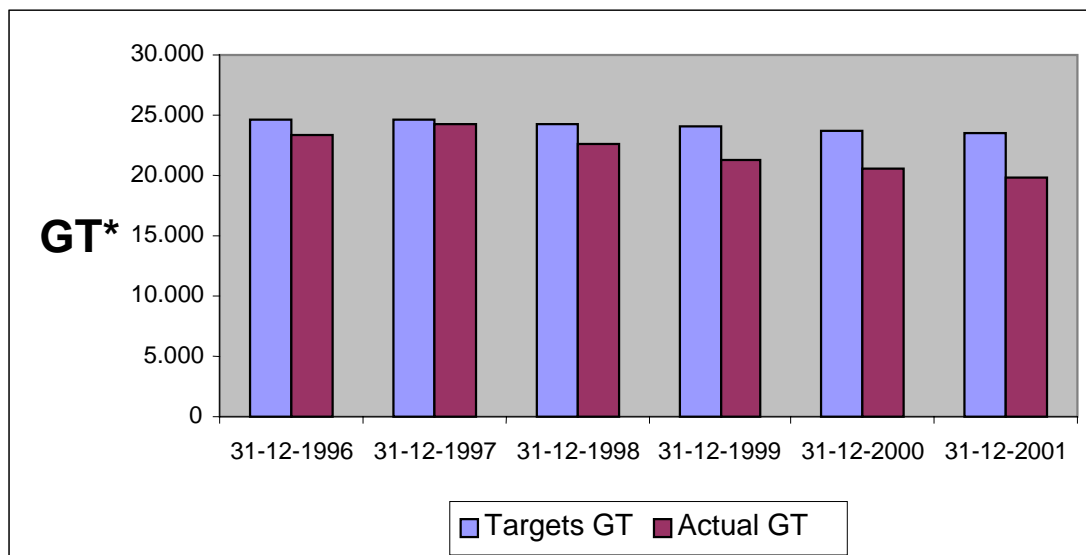
Finland

Segment	Description	Number of vessels	Situation 31.12.2001		Objective 31.12.2001		% Situation / Objective 31.12.2001	
			GT*	kW	GT*	kW	GT*	kW
4L1	Small-scale coastal fishing vessels <12 m	3.369	8.373	129.909	10.100	142.110	82,9%	91,4%
4L2	Trawlers	178	9.236	48.592	10.470	58.031	88,2%	83,7%
4L3	Trawlers	3	449	1.287	585	1.680	76,8%	76,6%
4L4	Passive gear	60	1.690	11.556	2.272	15.813	74,4%	73,1%
	TOTAL	3.610	19.748	191.344	23.427	217.634	84,3%	87,9%

(b) Fleet evolution

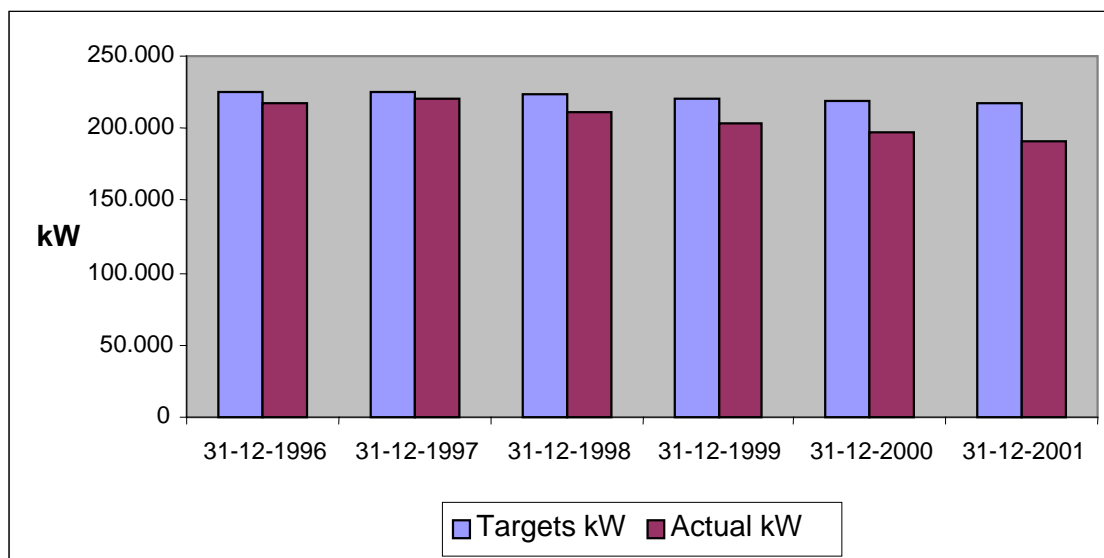
Evolution of global fleet capacity in GT* compared to targets.

Finland



Evolution of global fleet capacity in kW compared to targets.

Finland



(c) Fishing effort

Finland

Segment code	1999		2000		2001	
	GT days	kW days	GT days	kW days	GT days	kW days
4L1	324	5.348	285	4.631	257	4.404
4L2	1.075	4.917	1.174	5.086	1.005	4.285
4L3	103	288	106	294	96	264
4L4	96	489	73	413	73	436

units in '000 GT days and '000 kW days

FRANCE

(a) Situation of the fleet

France

	Segment	Description	Number of vessels	Situation 31.12.2001		Objective 31.12.2001		% Situation / Objective 31.12.2001	
				GT*	kW	GT*	kW	GT*	kW
Mainland	4F1	Small-scale coastal fishing vessels <12 m	2.068	9.809	163.400	11.295	164.874	86,8%	99,1%
	4F2	Trawlers =< 30 m	1.562	78.119	362.884	60.847	338.387	128,4%	107,2%
	4F3	Trawlers >30 m	71	38.993	73.620	41.924	85.388	93%	86,2%
	4F4	Non-trawlers 12-25 m	244	13.424	60.614	9.753	61.755	137,6%	98,2%
	4F5	Non-trawlers > 25 m	10	2.869	6.315	913	2.551	314,2%	247,5%
	4F6	Pelagic trawlers > 50 m	3	6.803	8.580	6.970	8.580	97,6%	100%
	4F7	Small-scale specialised	1.488	4.300	90.894	5.078	99.722	84,7%	91,1%
	4F8	Trawlers	137	9.551	40.335	7.530	43.144	126,8%	93,5%
	4F9	Purse seiners	43	5.520	24.993	4.974	25.965	111%	96,3%
	4FA	Dakar pole & line vessels	5	1.265	2.744	1.744	3.935	72,5%	69,7%
	4FB	Purse seiners	28	42.881	77.376	34.561	87.494	124,1%	88,4%
Overseas departments	4FC	< 12 m	254	375	11.857	1.000	15.000	37,5%	79%
	4FD	Tuna fleet	31	1.632	7.551	4.400	11.000	37,1%	68,6%
	4FE	Others > 12 m	3	2.358	2.934	4.055	8.110	58,2%	36,2%
	4FF	< 12 m	60	253	3.379	400	5.250	63,3%	64,4%
	4FG	Shrimp vessels	57	6.451	18.281	6.526	19.726	98,9%	92,7%
	4FH	Offshore vessels	4	242	905	3.500	5.000	6,9%	18,1%
	4FJ	< 12 m	998	1.901	51.178	2.800	65.500	67,9%	78,1%

	4FK	> 12 m	7	676	2.378	1.000	3.000	67,6%	79,3%
	4FL	< 12 m	858	2.306	87.815	4.100	105.000	56,2%	83,6%
	4FM	> 12 m	1	14	220	500	1.750	2,8%	12,6%
	TOTAL		7.932	229.742	1.098.253	213.870	1.161.131	107,4%	94,6%

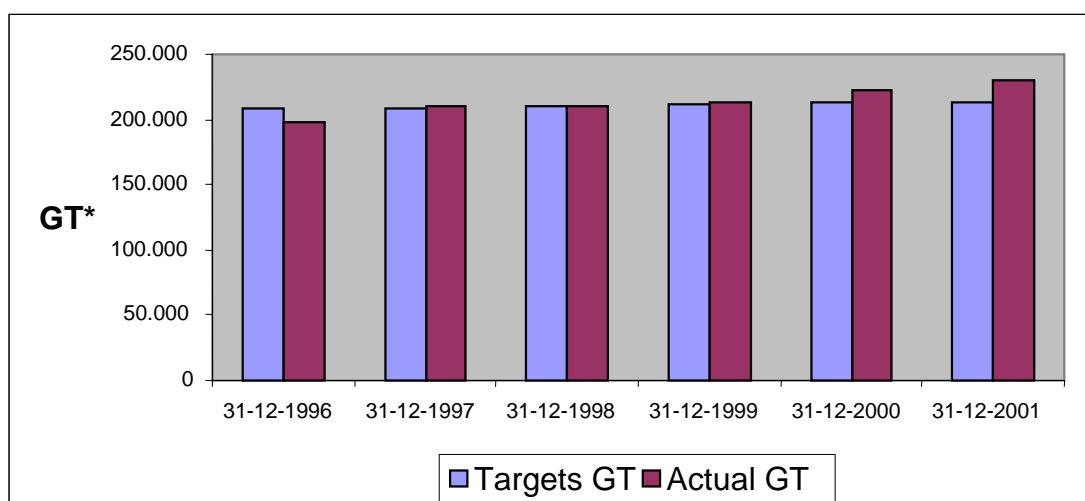
Bold italic type indicates that the targets have not been met. It should be noted that the tonnage targets have not been revised to take into account the remeasurement in units of GT, so the comparisons between the situation and the targets are uncertain.

The overcapacity in terms of tonnage reflected by the fishing vessel register data for the segments 4F2 (trawlers <= 30 m), 4F9 (seiners, Mediterranean) and 4FB (seiners, international waters) and for the global situation is likely to disappear after the *targets* are adjusted following remeasurement.

(b) Fleet evolution

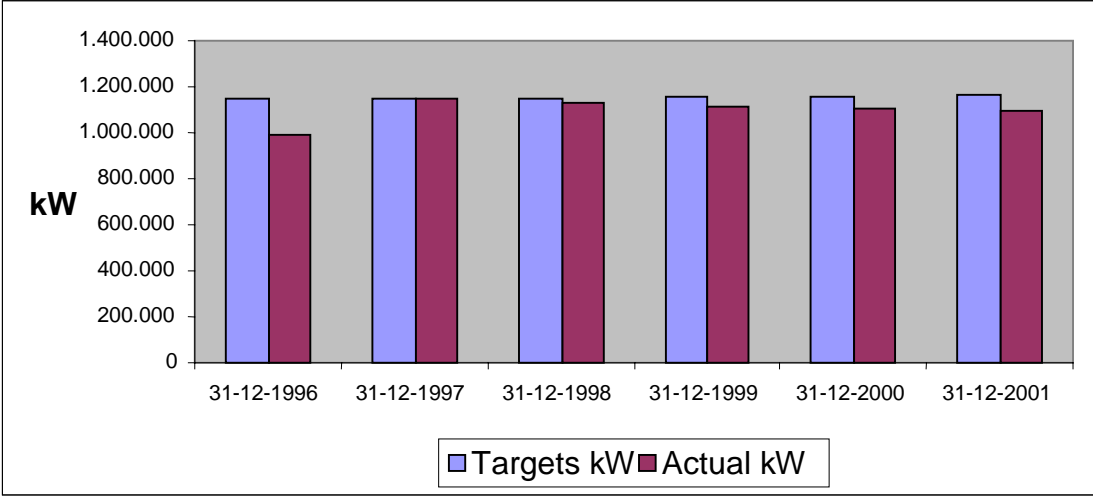
Evolution of global fleet capacity in GT compared to targets.*

France



Evolution of global fleet capacity in kW compared to targets.

France



(c) Fishing effort

France

Segment code	Fishery	1997	1997	1998	1998	1999	1999	2000	2000	2001	2001
		GT days	kW days	GT days	kW days	GT days	kW days	GT days	kW days	GT days	kW days
4F1											
4F2		14.320	92.831	13.600	87.739	13.332	85.771	11.898	76.357	13.774	87.092
4F3	F1	8.814	22.004	8.656	21.748	8.695	21.906	7.896	20.593	8.504	21.497
4F4											
4F5											
4F6	F1	1.722	2.523	1.581	2.317	1.499	2.196	1.657	2.428	1.854	2.334
4F7											
4F8	F1	1.835	10.454	1.613	9.173	1.522	8.624	1.486	8.281	1.569	8.317
4F9	F1	776	4.425	798	4.168	807	4.060	704	3.435	517	2.495
4F9	F2	66	442	46	360	43	350	26	213	20	178
4FA		488	1.102	384	855	310	678	293	639	345	755
4FB		10.291	25.843	10.156	25.470	9.772	24.315	8.695	21.474	9.058	21.897
4FC											
4FD											
4FE											
4FF											
4FG											
4FH											
4FJ											
4FK											
4FL											
4FM											

units in '000 GT days and '000 kW days

(d) Cumulative fishing effort for segments subject to a system for the management of fishing effort

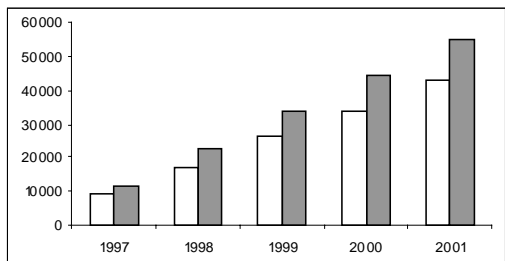
France

Segment code	Fishery	End 1997		End 1998		End 1999		End 2000		End 2001	
		GT days	kW days	GT days	kW days	GT days	kW days	GT days	kW days	GT days	kW days
4F3	F1	8.814	22.004	17.470	43.752	26.165	65.658	34.061	86.251	42.566	107.748
4F6	F1	1.722	2.523	3.303	4.839	4.802	7.035	6.459	9.464	8.313	11.798
4F8	F1	1.835	10.454	3.448	19.627	4.970	28.251	6.456	36.532	8.026	44.849
4F9	F1	776	4.425	1.574	8.593	2.381	12.654	3.085	16.089	3.602	18.584
4F9	F2	66	442	112	802	156	1.152	182	1.365	202	1.542

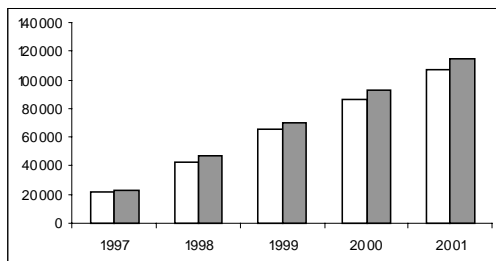
units in '000 GT days and '000 kW days

France - 4F3 Trawlers > 30 metres

GT days ('000)

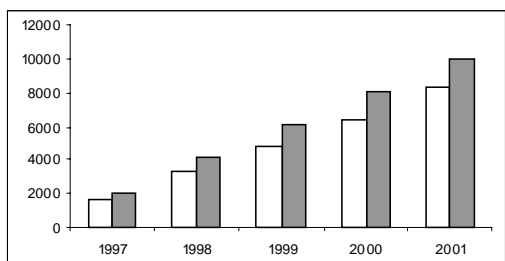


kW days ('000)

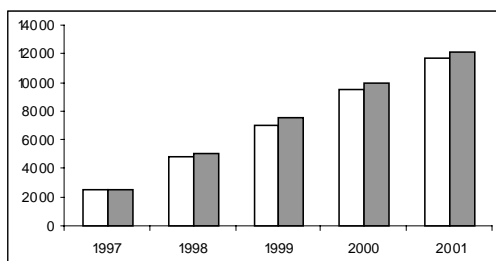


France - 4F6 Pelagic trawlers > 50 metres

GT days ('000)

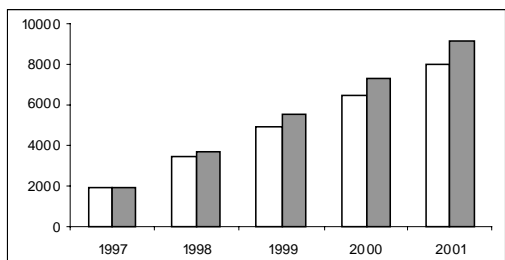


kW days ('000)

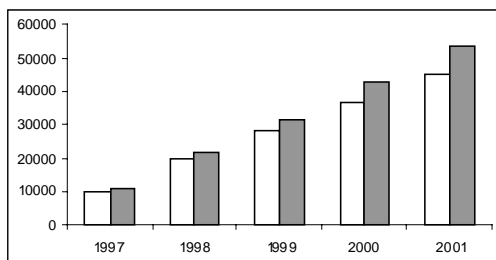


France - 4F8 Mediterranean trawlers

GT days ('000)

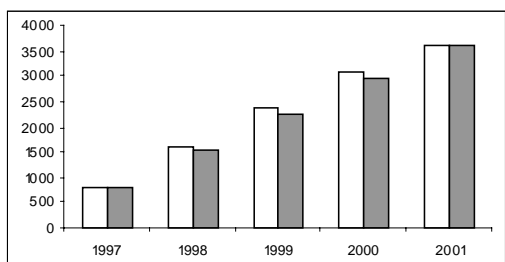


kW days ('000)

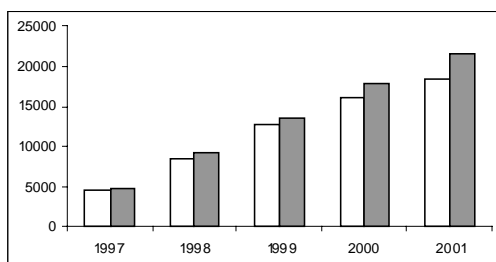


France - 4F9 Mediterranean seiners: fishery F1: Tuna

GT days ('000)

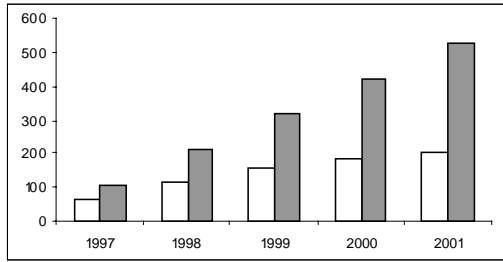


kW days ('000)

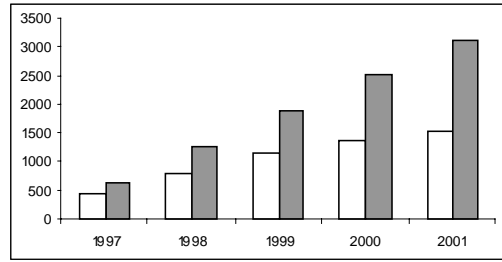


France - 4F9 Mediterranean seiners: fishery F2 - Small pelagics

GT days ('000)



kW days ('000)



UNITED KINGDOM

(a) Situation of the fleet

United Kingdom

Segment	Description	Number of vessels	Situation 31.12.2001		Objective 31.12.2001		% Situation / Objective 31.12.2001	
			GT*	KW	GT*	kW	GT*	kW
4N1	Small-scale coastal fishing vessels <10 m	5.561	19.521	277.466	21.901	286.154	89,1%	97,0%
4N2	Pelagic trawlers and purse seiners	43	45.514	81.417	34.876	82.168	130,5%	99,1%
4N3	Beam trawlers	112	23.475	85.364	26.062	103.054	90,1%	82,8%
4N4	Demersal trawlers, seiners and nephrops	1.113	109.391	330.547	120.630	422.876	90,7%	78,2%
4N5	Liners and netters	140	12.630	35.743	14.538	61.744	86,9%	57,9%
4N6	Shellfish - fixed	277	6.144	37.776	6.242	35.768	98,4%	105,6%
4N7	Shellfish - mobile	209	10.545	44.589	11.552	50.958	91,3%	87,5%
4N8	Distant water	11	15.426	20.693	14.883	23.741	103,6%	87,2%
NC	Unclassified	82	12.988	40.138				
	TOTAL	7.548	255.634	953.733	250.684	1.066.463	102,0%	89,4%

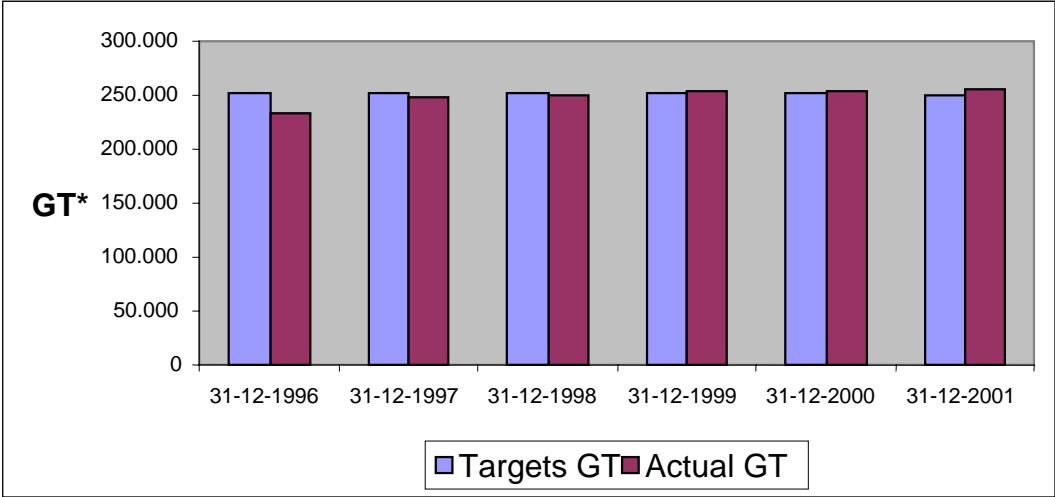
Bold italic type indicates that the targets have not been met. It should be noted that the tonnage targets have not been revised to take into account the remeasurement in units of GT, so the comparisons between the situation and the targets are uncertain.

The overcapacity in terms of tonnage reflected by the fishing vessel register data for the global situation is likely to disappear after the *targets* are adjusted to take into account the effect of remeasurement.

(b) Fleet evolution

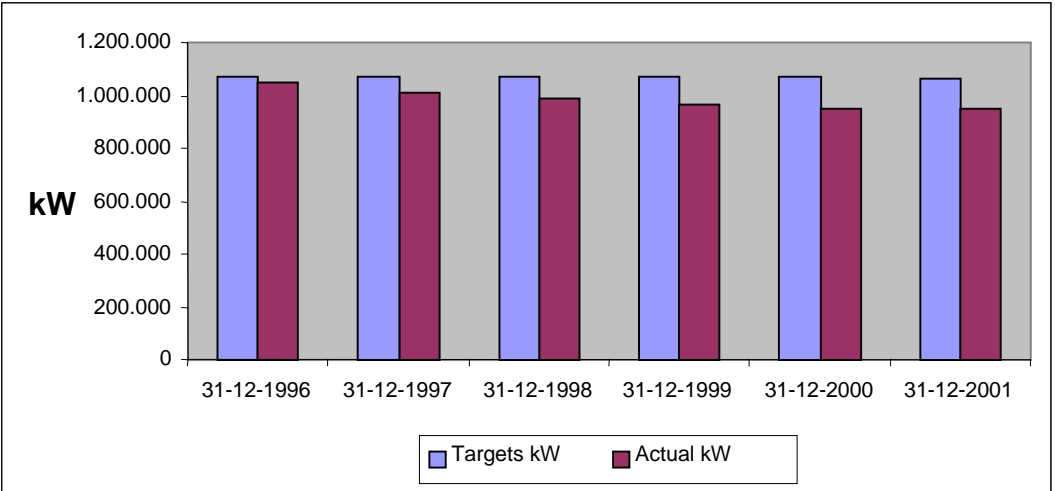
Evolution of global fleet capacity in GT compared to targets.*

United Kingdom



Evolution of global fleet capacity in kW compared to targets.

United Kingdom



(c) Fishing effort

United Kingdom

Segment code	Fishery	1997	1997	1998	1998	1999	1999	2000	2000	2001	2001
		GT days	kW days	GT days	kW days	GT days	kW days	GT days	kW days	GT days	kW days
4N1											
4N2	F1	1.499	2.418	1.115	1.784	1.295	1.874	1.440	2.281	1.298	2.032
4N2	F2	4.497	7.256	4.107	6.238	4.192	6.801	4.544	7.296	4.264	7.150
4N2	F3	516	780	183	313	267	411	162	250	198	289
4N2	F4	386	523	754	1.012	800	1.112	389	516	402	627
4N3	F1	4.155	16.357	3.880	14.826	3.814	14.617	3.378	13.005	3.105	11.837
4N3	F2	2.179	7.620	2.076	7.447	1.981	7.014	1.826	6.267	1.760	6.129
4N4	F1	28.486	84.159	27.348	79.109	27.886	78.162	28.129	79.015	26.075	74.031
4N5											
4N6											
4N7											
4N8	F1	1.828	2.788	1.571	2.891	1.515	2.673	755	1.558	2.314	1.344

units in '000 GT days and '000 kW days

(d) Cumulative fishing effort for segments subject to a system for the management of fishing effort

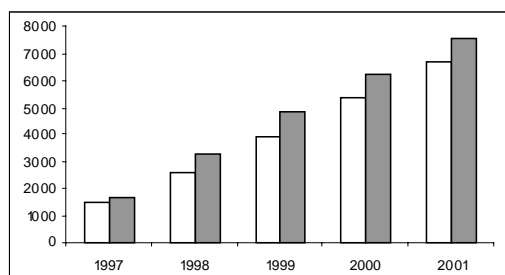
United Kingdom

Segment code	Fishery	End 1997		End 1998		End 1999		End 2000		End 2001	
		GT –	kW –	GT –	kW –	GT –	kW –	GT –	kW –	GT –	kW –
		days	days	days	days	days	days	days	days	days	days
4N2	F1	1.499	2.418	2.614	4.202	3.909	6.076	5.349	8.357	6.647	10.389
4N2	F2	4.497	7.256	8.604	13.494	12.796	20.295	17.340	27.591	21.604	34.741
4N2	F3	516	780	699	1.093	966	1.504	1.128	1.754	1.326	2.043
4N2	F4	386	523	1.140	1.535	1.940	2.647	2.329	3.163	2.731	3.790
4N3	F1	4.155	16.357	8.035	31.183	11.849	45.800	15.227	58.805	18.332	70.642
4N3	F2	2.179	7.620	4.255	15.067	6.236	22.081	8.062	28.348	9.822	34.477
4N4	F1	28.486	84.159	55.834	163.268	83.720	241.430	111.849	320.445	137.924	394.476
4N8	F1	1.828	2.788	3.399	5.679	4.914	8.352	5.669	9.910	7.983	11.254

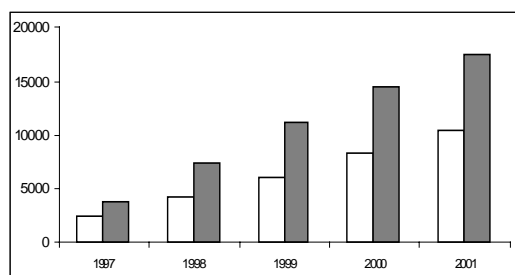
units in '000 GT days and '000 kW days

United Kingdom - 4N2 Pelagic: fishery F1 - North Sea herring

GT days ('000)

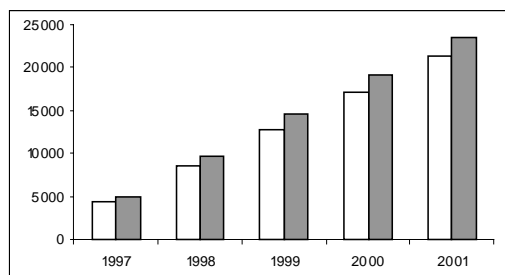


kW days ('000)

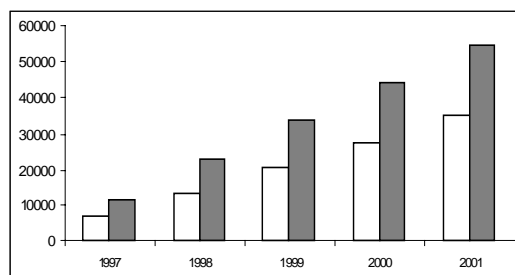


United Kingdom - 4N2 Pelagic: fishery F2 - Western pelagic

GT days ('000)

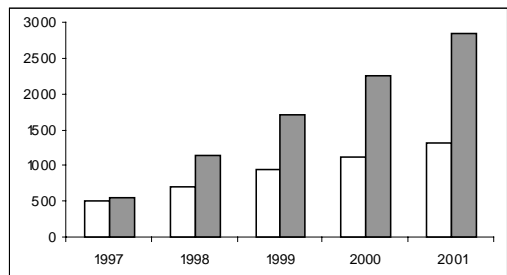


kW days ('000)

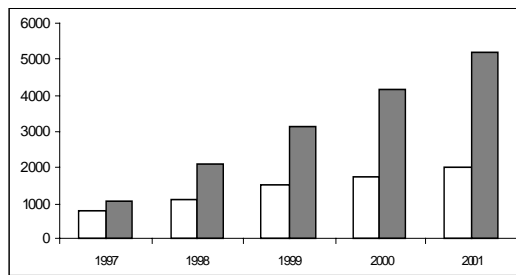


United Kingdom - 4N2 Pelagic: fishery F3. Atlanto-Scandian herring

GT days ('000)



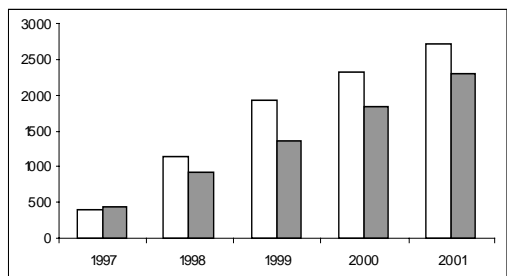
kW days ('000)



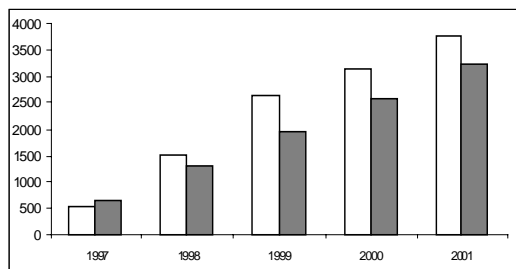
NB: A footnote to the table of targets in the MAGP Decision states that the targets for this fishery are subject to review in the light of the development of the fishery.

United Kingdom - 4N2 Pelagic: fishery F4 - Blue whiting

GT days ('000)



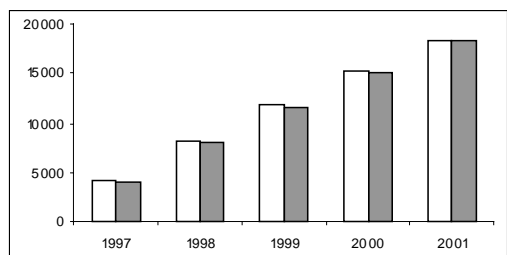
kW days ('000)



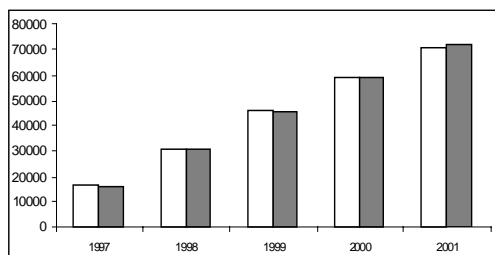
NB: A footnote to the table of targets in the MAGP Decision states that the targets for this fishery are subject to review in the light of the development of the fishery.

United Kingdom - 4N3 Beam trawl: fishery F1 - Flatfish IV

GT days ('000)

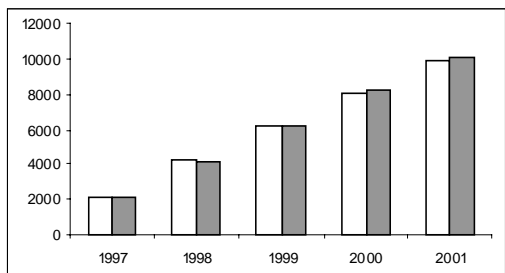


kW days ('000)

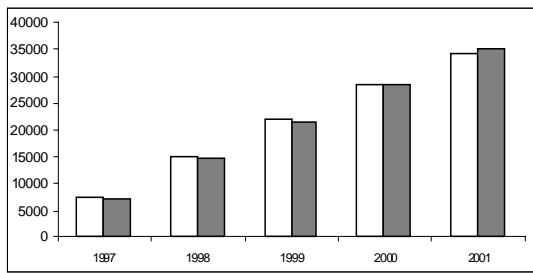


United Kingdom - 4N3 Beam trawl: fishery F2 - Flatfish VII, VI

GT days ('000)

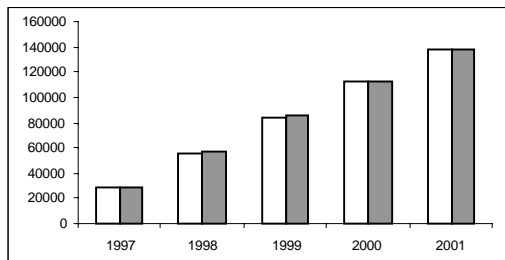


kW days ('000)

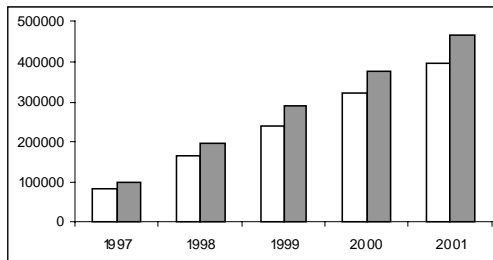


United Kingdom - 4N4 Demersal trawlers, seiners, nephrops

GT days ('000)

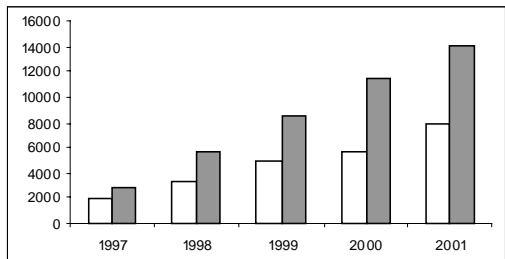


kW days ('000)

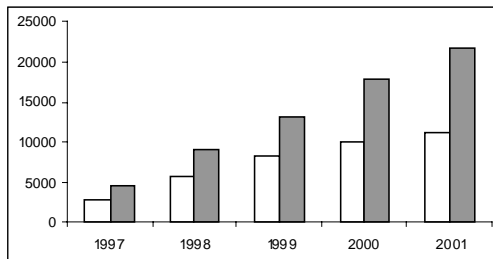


United Kingdom - 4N8 Distant water

GT days ('000)



kW days ('000)



GREECE

(a) Situation of the fleet

Greece

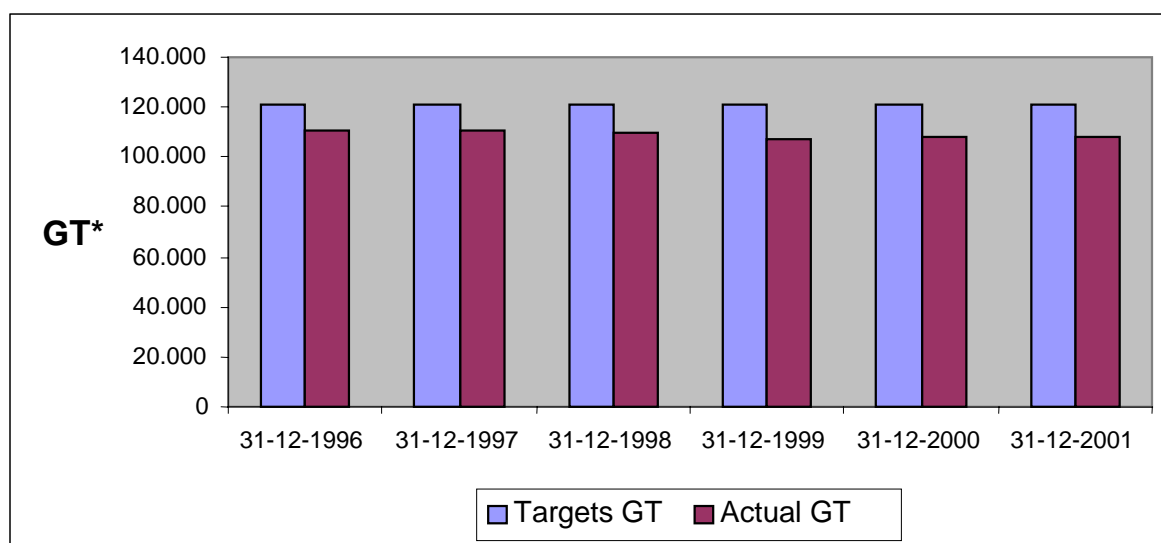
Segment	Description	Number of vessels	Situation 31.12.2001		Objective 31.12.2001		% Situation / Objective 31.12.2001	
			GT*	kW	GT*	kW	GT*	kW
4D1	Small-scale coastal fishing vessels <12 m	18.081	35.645	352.725	40.366	370.358	88,3%	95,2%
4D2	Demersal species	363	27.154	103.805	23.648	95.976	114,8%	108,2%
4D3	Gri-gri	344	11.579	61.558	12.539	63.445	92,3%	97,0%
4D4	Sponges	8	66	541	186	1.202	35,5%	45,0%
4D5	> 12 m	978	13.030	77.289	13.025	85.440	100,0%	90,5%
4D6	Demersal species international waters	53	19.270	32.365	30.991	37.751	62,2%	85,7%
NC	Unclassified	267	1.995	8.924				
	TOTAL	20.094	108.739	637.207	120.755	654.172	90,0%	97,4%

Bold italic type indicates that the targets have not been met. It should be noted that the tonnage targets have not been revised to take into account the remeasurement in units of GT, so the comparisons between the situation and the targets are uncertain.

(b) Fleet evolution

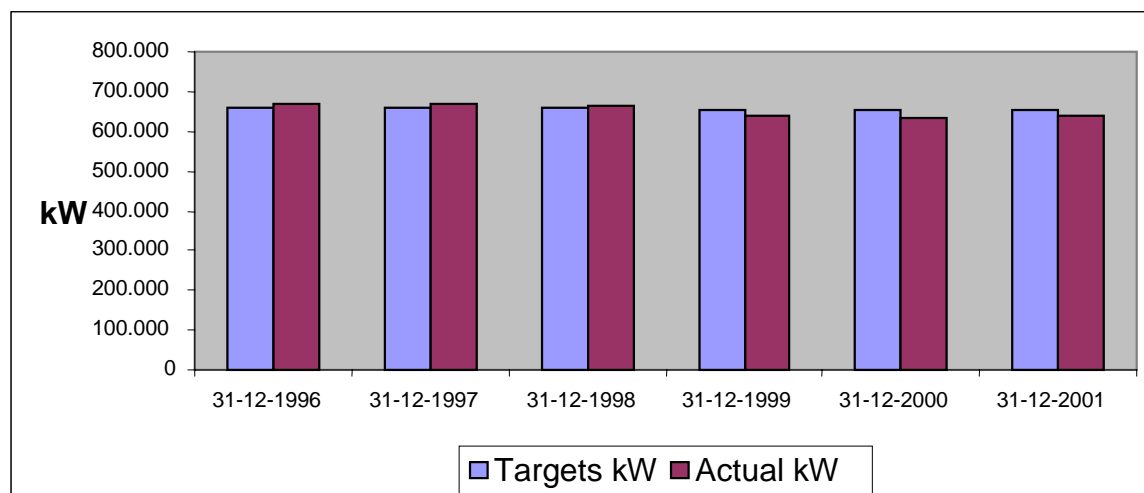
Evolution of global fleet capacity in GT compared to targets.*

Greece



Evolution of global fleet capacity in kW compared to targets.

Greece



(c) Fishing effort

Greece

Segment code	1997		1998		1999		2000		2001	
	GT days	kW days	GT days	kW days	GT days	kW days	GT days	kW days	GT days	kW days
4D1	8.434	68.582	9.178	72.889	9.382	73.913	9.024	71.378	6.992	69.836
4D2	5.692	25.686	5.148	23.854	4.858	22.618	4.331	20.112	5.602	21.149
4D3	2.717	12.388	2.641	12.129	2.665	12.228	2.507	11.506	2.283	11.714
4D4										
4D5	2.660	16.248	2.614	15.701	2.534	15.205	2.574	15.456	2.326	15.005
4D6	4.680	11.112	3.567	8.334	3.807	9.039	4.187	10.009	5.154	8.262

units in '000 GT days and '000 kW days

IRELAND

(a) Situation of the fleet

In 2001 Ireland did not communicate the data on its fleet as required by Commission Regulation (EC) No 2090/98⁹. The following table is based on information provided by Ireland in accordance with Article 5 of Council Regulation (EC) No 2792/1999¹⁰.

Ireland

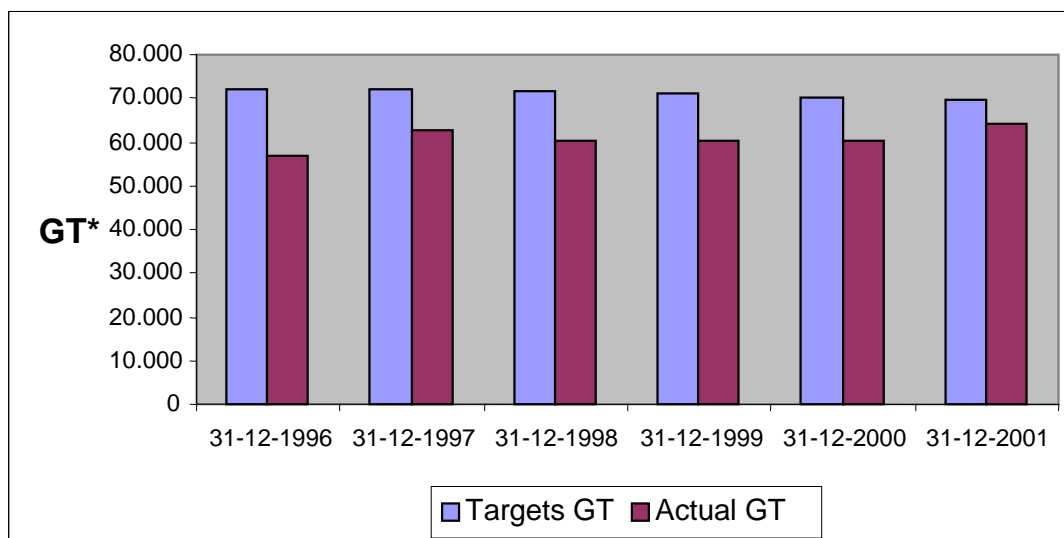
Segment	Description	Number of vessels	Situation 31.12.2001		Objective 31.12.2001		% Situation / Objective 31.12.2001	
			GT*	kW	GT*	kW	GT*	kW
4G1	Polyvalent	1.312	40.476	138.627	46.185	163.857	87,6%	84,6%
4G2	Pelagic trawlers and purse seiners	23	22.804	41.520	22.308	29.039	102,2%	143,0%
4G3	Beam trawlers	6	1.132	5.129	1.156	6.113	97,9%	83,9%
	TOTAL	1.341	64.412	185.276	69.649	199.009	92,5%	93,1%

Bold italic type indicates that the targets have not been met. It should be noted that the tonnage targets have not been revised to take into account the remeasurement in units of GT, so the comparisons between the situation and the targets are uncertain.

(b) Fleet evolution

Evolution of global fleet capacity in GT compared to targets.*

Ireland (the data has been taken from the fishing vessel register)

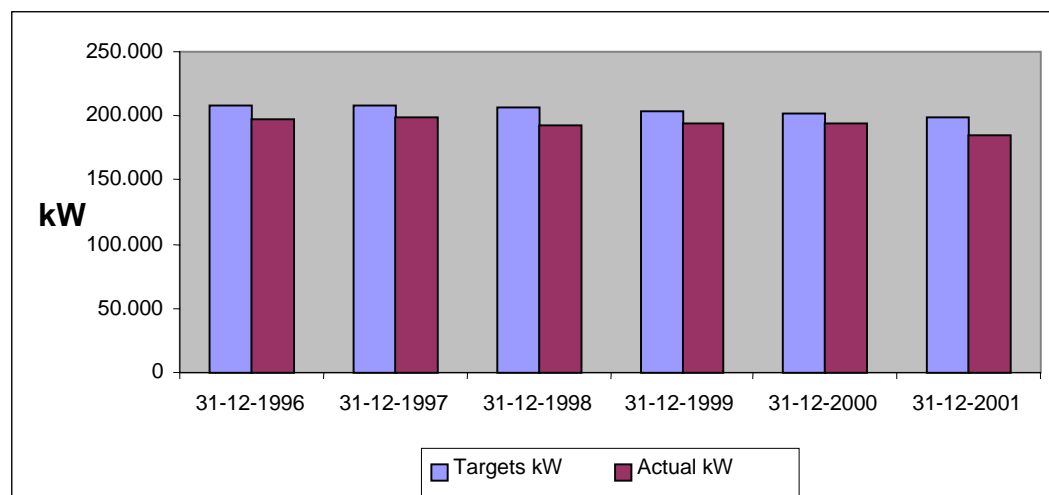


⁹ OJ L 266, 1.10.1998, p. 27.

¹⁰ OJ L 337, 30.12.1999, p. 10.

Evolution of global fleet capacity in kW compared to targets.

Ireland (the data has been taken from the fishing vessel register)



(c) Fishing effort

Ireland

Segment code	Fishery	1997		1998		1999		2000		2001	
		GT days	kW days	GT days	kW days	GT days	kW days	GT days	kW days	GT days	kW days
4G1		4.973	18.399	5.359	18.547	6.120	22.509	5.268	19.864	7.069	21.606
4G2	F1	4.451	7.773	4.029	7.022	4.091	7.020	4.373	7.141	3.846	6.984
4G3	F1	232	1.112	273	1.304	278	1.278	190	883	144	655

units in '000 GT days and '000 kW days

(d) Cumulative fishing effort for segments subject to a system for the management of fishing effort

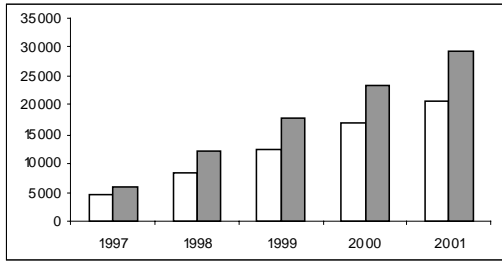
Ireland

Segment code	Fishery	End 1997		End 1998		End 1999		End 2000		End 2001	
		GT – days	kW – days	GT – days	kW – days	GT – days	kW – days	GT – days	kW – days	GT – days	kW – days
4G2	F1	4.451	7.773	8.480	14.795	12.571	21.815	16.944	28.956	20.790	35.940
4G3	F1	232	1.112	505	2.416	783	3.694	973	4.577	1.117	5.232

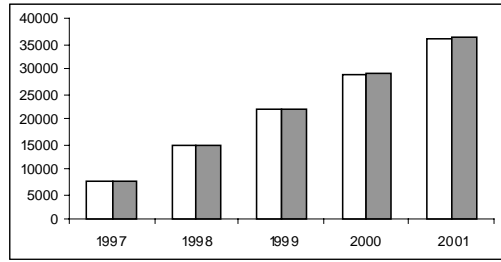
units in '000 GT days and '000 kW days

Ireland - 4G2 Pelagic

GT days ('000)

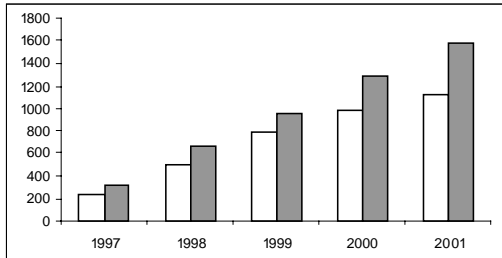


kW days ('000)

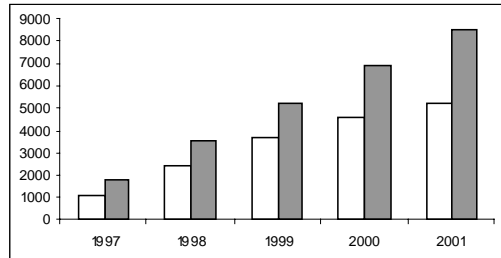


Ireland - 4G3 Beam trawl

GT days ('000)



kW days ('000)



ITALY

(a) Situation of the fleet

Italy

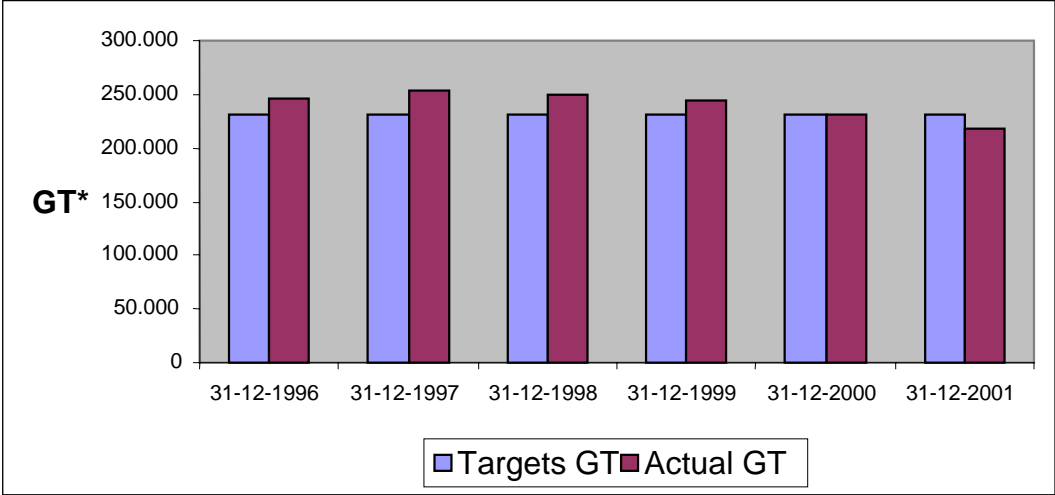
Segment	Description	Number of vessels	Situation 31.12.2001		Objective 31.12.2001		% Situation / Objective 31.12.2001	
			GT*	kW	GT*	kW	GT*	kW
4H1	Small-scale coastal fishing vessels <12 m	4.519	8.152	109.110	10.704	79.994	76,2%	136,4%
4H2	Bottom trawlers	1.554	71.914	326.097	64.152	312.437	112,1%	104,4%
4H3	Pelagic trawlers	11	632	3.515	794	4.749	79,6%	74,0%
4H4	Small purse seiners	7.568	43.093	397.237	58.221	453.220	74,0%	87,6%
4H5	Hydraulic dredgers	734	9.532	79.532	9.802	95.108	97,2%	83,6%
4H6	Polyvalent	1.606	49.628	272.117	30.808	199.361	161,1%	136,5%
4H7	Bottom trawlers	100	10.998	37.345	8.025	22.276	137,0%	167,6%
4H8	Polyvalent non-trawlers	19	2.840	10.155	6.301	23.696	45,1%	42,9%
4H9	Tuna purse seiners	21	2.641	11.256	3.158	12.081	83,6%	93,2%
4HA	Swordfish fleet	282	4.716	37.337	8.980	85.489	52,5%	43,7%
4HB	Trawlers and purse seiners	22	12.124	25.500	29.232	53.364	41,5%	47,8%
NC	Unclassified	50	1.231	5.885				
	TOTAL	16.486	217.501	1.315.086	230.177	1.341.775	94,5%	98,0%

Bold italic type indicates that the targets have not been met. It should be noted that the tonnage targets have not been revised to take into account the remeasurement in units of GT, so the comparisons between the situation and the targets are uncertain.

(b) Fleet evolution

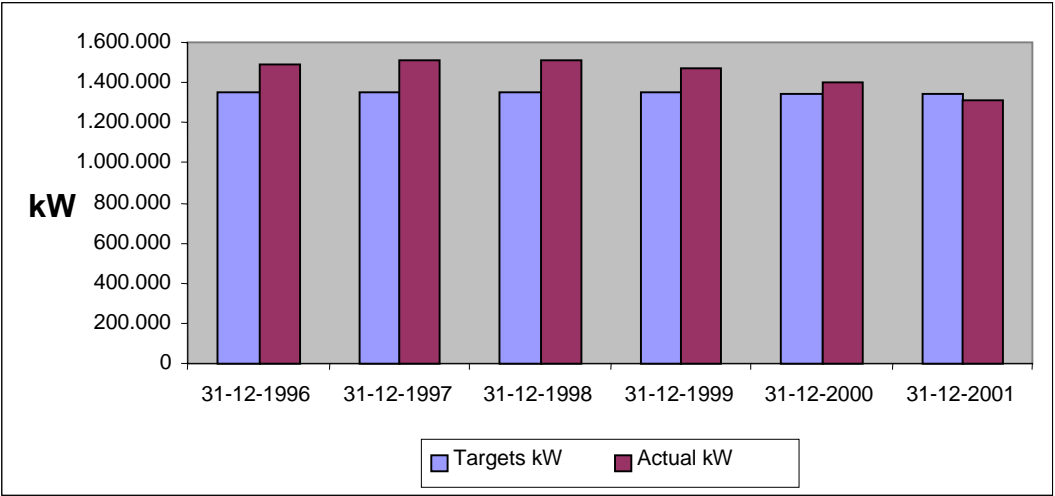
Evolution of fleet capacity in GT compared to targets.*

Italy



Evolution of fleet capacity in kW compared to targets.

Italy



(c) Fishing effort

Italy

Segment code	1997	1997	1998	1998	1999	1999	2000	2000	2001	2001
	GT days	kW days	GT days	kW days	GT days	kW days	GT days	kW days	GT days	kW days
4H1	41.632	386.281	69.764	618.885	70.004	640.539			2.769	25.138
4H2	38.610	187.855	41.960	211.766	39.503	200.341			11.883	64.053
4H3	305	1.526	258	1.410	208	1.135			41	216
4H4									6.279	56.737
4H5	664	6.925	607	6.379	673	7.132			765	7.989
4H6	42.226	330.681	31.928	266.564	34.271	281.087			7.274	49.359
4H7									1.112	3.394
4H8									142	547
4H9									635	2.867
4HA									335	2.960
4HB										

units in '000 GT days and '000 kW days

There are significant differences in terms of both GT-days and kW-days between the fishing efforts communicated in 2001 and in the previous period (1997-99). These results require further clarification.

NETHERLANDS

(a) Situation of the fleet

In 2001 the Netherlands did not regularly communicate the data on its fleet as required by Commission Regulation (EC) No 2090/98¹¹. The following table is based on information provided by the Netherlands in accordance with Article 5 of Council Regulation (EC) No 2792/1999¹².

Netherlands

Segment	Description	Number of vessels	Situation 31.12.2001		Objective 31.12.2001		% Situation / Objective 31.12.2001	
			GT*	kW	GT*	kW	GT*	kW
4J1	Small-scale coastal fishing vessels <12 m	86	146	1.976	229	1.968	63,8%	100,4%
4J2	Pelagic trawlers	16	90.939	99.297	48.790	62.475	186,4%	158,9%
4J3	Cutters > 221 kW	169	67.301	257.223	71.345	275.616	94,3%	93,3%
4J4	Eurocutters <= 221 kW	177	12.643	34.267	13.427	41.529	94,2%	82,5%
4J5	Small vessels	81	177	1.992	213	2.245	83,1%	88,7%
4J6	Shrimp vessels	83	3.809	15.605	2.813	10.318	135,4%	151,2%
4J7	Vessels fishing off-quota species only	139	4.927	16.507	8.703	29.010	56,6%	56,9%
	TOTAL	751	179.942	426.867	145.520	423.161	123,7%	100,9%

Bold italic type indicates that the targets have not been met. It should be noted that the tonnage targets have not been revised to take into account the remeasurement in units of GT, so the comparisons between the situation and the targets are uncertain.

In December 1999, the Netherlands asked for additional fishing effort for segment 4J2 (pelagic trawlers) in west African waters. This request was based on Article 8 of Council Decision 97/413/EC¹³ and represented capacity of 41 000 kW and 45 000 GT, corresponding in fact to the difference between the fleet situation and the MAGP IV targets.

On the basis of an opinion from the Scientific Committee, in November 2000 the Commission proposed an increase of 15 000 kW and 15 000 GT. This proposal was rejected by the Dutch authorities. The Netherlands subsequently asked for their request to be reconsidered on the

¹¹ OJ L 266, 1.10.1998, p. 27.

¹² OJ L 337, 30.12.1999, p. 10.

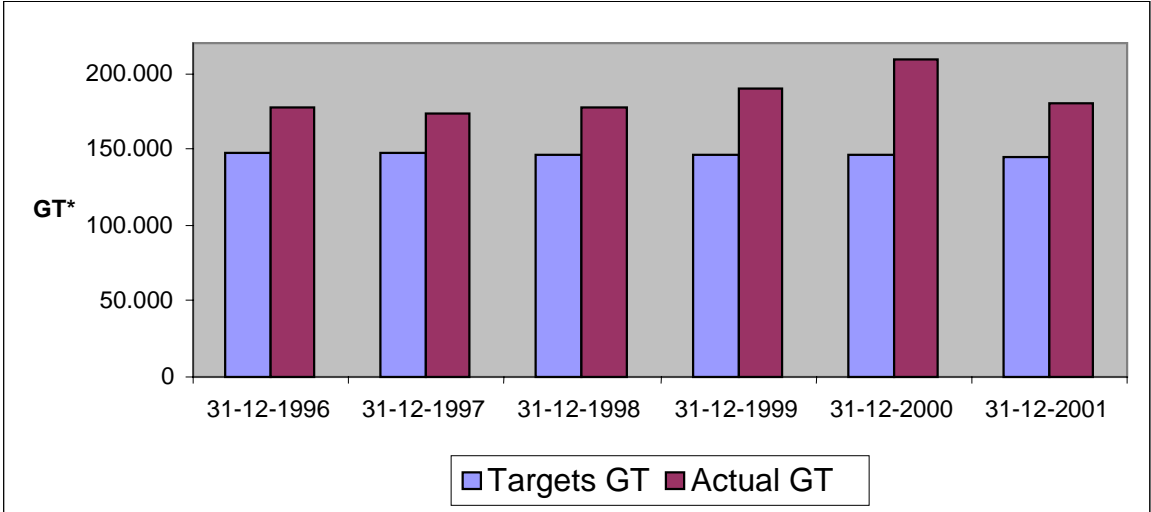
¹³ OJ L 175, 3.7.1997, p. 27.

basis of scientific information to be supplied to the Commission. This information was sent to the Commission in November 2001 and is still being given an in-depth examination.

(b) Fleet evolution

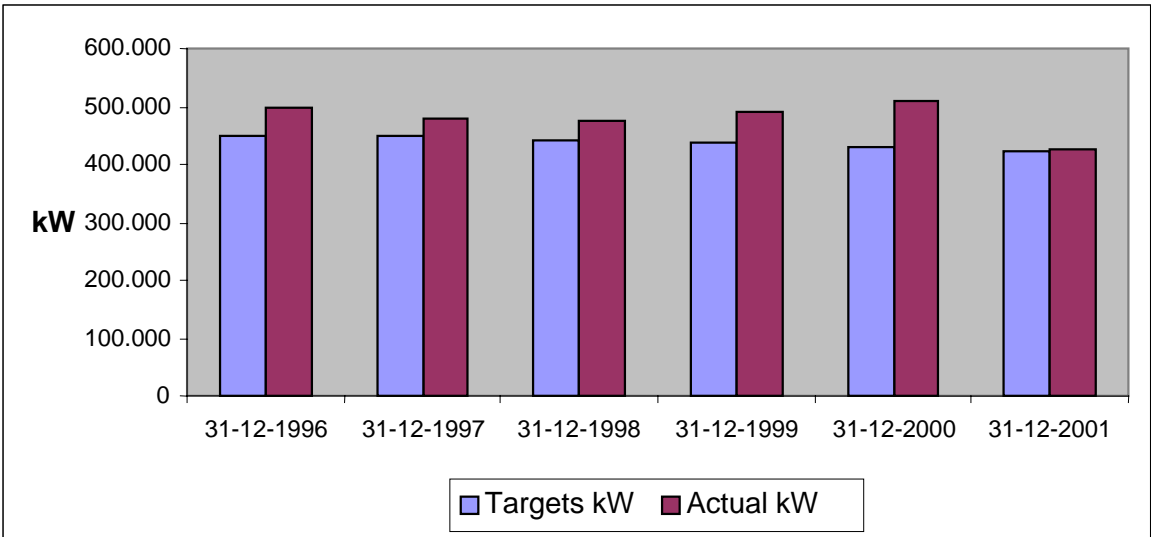
Evolution of global fleet capacity in GT compared to targets.*

Netherlands (the data has been taken from the fishing vessel register)



Evolution of global fleet capacity in kW compared to targets.

Netherlands (the data has been taken from the fishing vessel register)



(c) Fishing effort

Netherlands

Segment code	Fishery	1997	1997	1998	1998	1999	1999	2000	2000	2001	2001
		GT days	kW days	GT days	kW days	GT days	kW days	GT days	kW days	GT days	kW days
4J1		0	0	0	0	0	0	0	0	1	19
4J2	F1	17.083	20.052	18.552	21.436	21.242	24.706	24.687	27.880	28.388	30.660
4J3	F1	13.582	53.697	13.314	52.691	13.052	50.902	12.996	50.127	12.534	47.882
4J4	F1	1.718	4.814	1.592	4.322	1.585	4.253	1.575	4.153	1.663	4.243
4J5	F1	0	0	0	1	0	1	0	0	0	7
4J6		226	870	334	1.170	334	1.243	365	1.406	406	1.487
4J7		101	461	86	335	79	291	52	209	58	271

units in '000 GT days and '000 kW days

(d) Cumulative fishing effort for segments subject to a system for the management of fishing effort

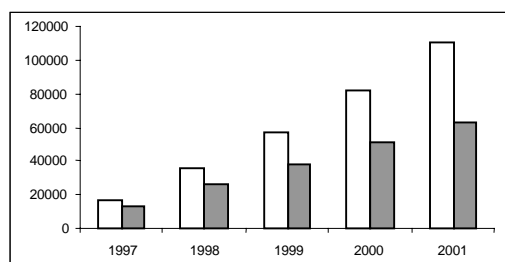
Netherlands

Segment code	Fishery	End 1997		End 1998		End 1999		End 2000		End 2001	
		GT –	kW –	GT –	kW –	GT –	kW –	GT –	kW –	GT –	kW –
		days	days	days	days	days	days	days	days	days	days
4J2	F1	17.083	20.052	35.636	41.488	56.878	66.193	81.565	94.073	109.953	124.734
4J3	F1	13.582	53.697	26.896	106.388	39.947	157.290	52.944	207.417	65.478	255.299
4J4	F1	1.718	4.814	3.311	9.136	4.896	13.389	6.471	17.542	8.134	21.786
4J5	F1	0	0	0	1	0	1	0	0	0	9

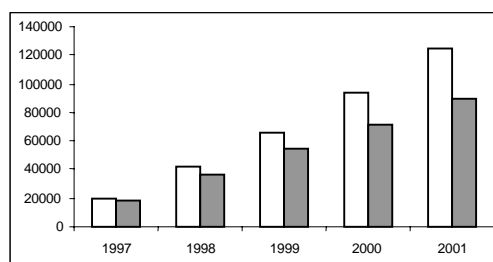
units in '000 GT days and '000 kW days

Netherlands - 4J2 Pelagic trawlers

GT days ('000)

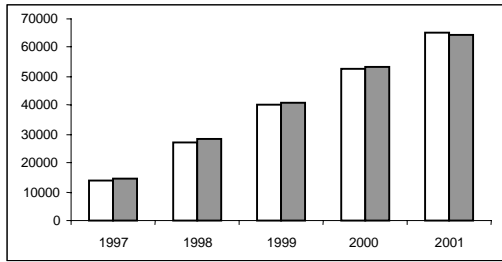


kW days ('000)

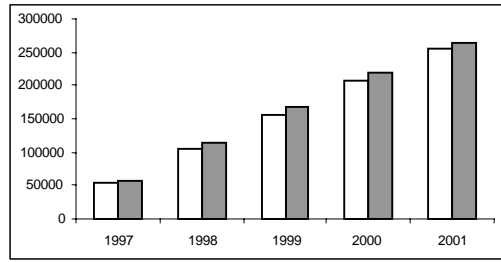


Netherlands - 4J3 Cutters > 221 kW

GT days ('000)

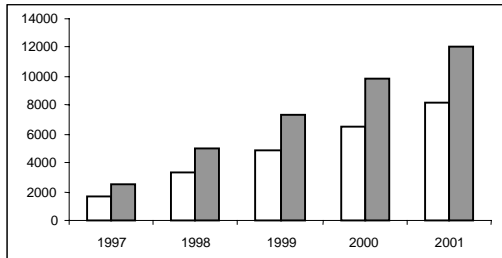


kW days ('000)

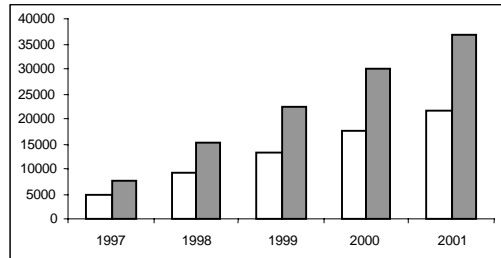


Netherlands - 4J4 Eurocutters <= 221 kW

GT days ('000)



kW days ('000)



PORTUGAL

(a) Situation of the fleet

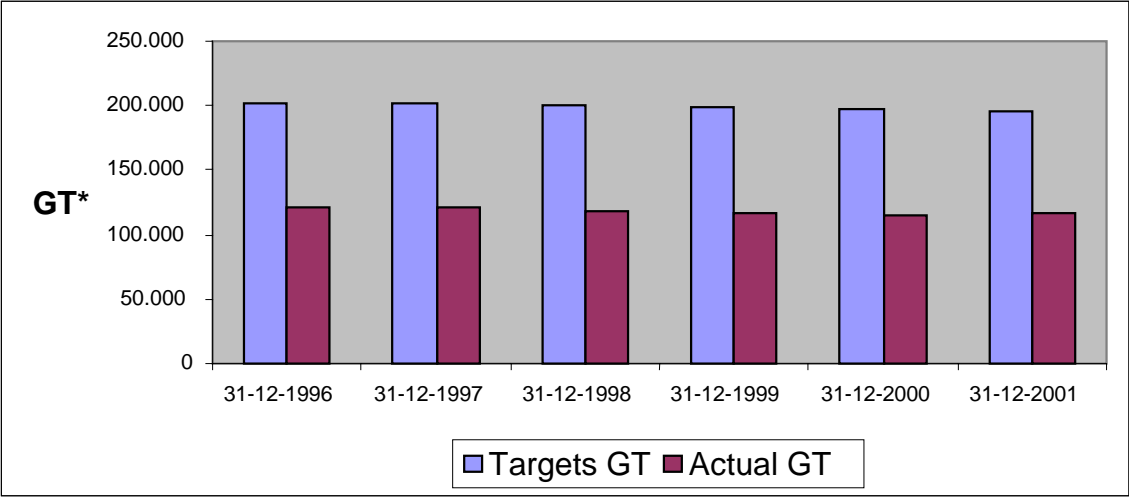
Portugal

Segment	Description	Number of vessels	Situation 31.12.2001		Objective 31.12.2001		% Situation / Objective 31.12.2001	
			GT*	kW	GT*	kW	GT*	kW
4K1	Small-scale coastal fishing vessels <12 m	7.562	10.018	105.124	15.774	112.941	63,5%	93,1%
4K2	Fixed gear >=12 m	499	21.940	82.502	29.544	98.378	74,3%	83,9%
4K3	Trawlers	111	19.926	55.124	20.946	60.114	95,1%	91,7%
4K4	Purse seiners	168	7.755	38.308	9.445	41.604	82,1%	92,1%
4K5	Polyvalent + trawler + small-scale coastal fishing vessels <12 m	52	40.060	54.451	96.922	103.390	41,3%	52,7%
4K6	Small-scale coastal Madeira < 12 m	442	480	3.153	680	4.574	70,6%	68,9%
4K7	Fixed gear >=12 m	53	3.958	13.974	5.354	17.414	73,9%	80,2%
4K8	Purse seiners	5	219	965	253	1.170	86,6%	82,5%
4K9	Small-scale coastal fishing vessels <12 m	1.502	2.239	18.921	2.721	20.815	82,3%	90,9%
4KA	Fixed gear >=12 m	119	10.372	30.718	14.246	36.846	72,8%	83,4%
NC	Unclassified	1	1	5				
	TOTAL	10.514	116.968	403.245	195.885	497.246	59,7%	81,1%

(b) Fleet evolution

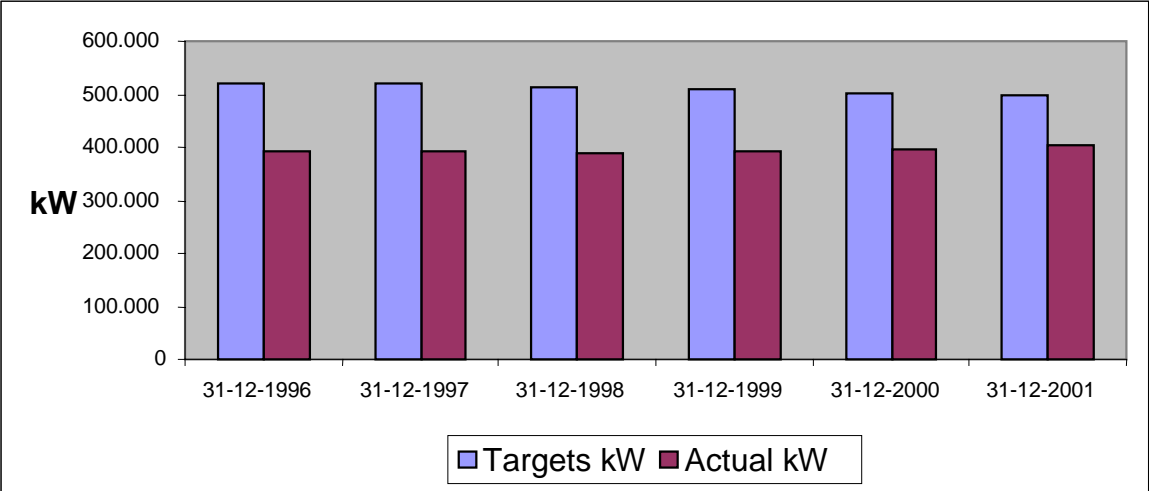
Evolution of global fleet capacity in GT compared to targets.*

Portugal



Evolution of global fleet capacity in kW compared to targets.

Portugal



(c) Fishing effort

Portugal

Segment code	1997		1998		1999		2000		2001	
	GT days	kW days	GT days	kW days	GT days	kW days	GT days	kW days	GT days	kW days
4K1	2.767	24.214	2.712	24.880	2.667	25.693	2.652	26.722	2.608	27.657
4K2	5.598	22.000	5.738	21.951	5.665	21.492	5.595	21.352	5.830	21.676
4K3	5.638	16.419	5.541	16.089	5.605	16.090	5.774	16.233	6.342	17.270
4K4	2.037	9.551	1.401	6.622	1.380	6.679	1.370	8.748	1.387	6.903
4K5	16.303	21.363	15.481	20.424	14.751	19.628	14.210	19.143	13.408	18.262
4K6	150	949	143	908	133	868	126	843	125	838
4K7	1.196	3.886	1.274	4.266	1.312	4.433	1.211	4.120	1.033	3.647
4K8	61	269	57	252	57	252	57	252	57	252
4K9	591	4.529	590	4.619	586	4.681	588	4.813	586	4.992
4KA	2.606	7.642	2.548	7.414	2.630	7.587	2.842	8.122	2.736	8.017

units in '000 GT days and '000 kW days

SWEDEN

(a) Situation of the fleet

Sweden

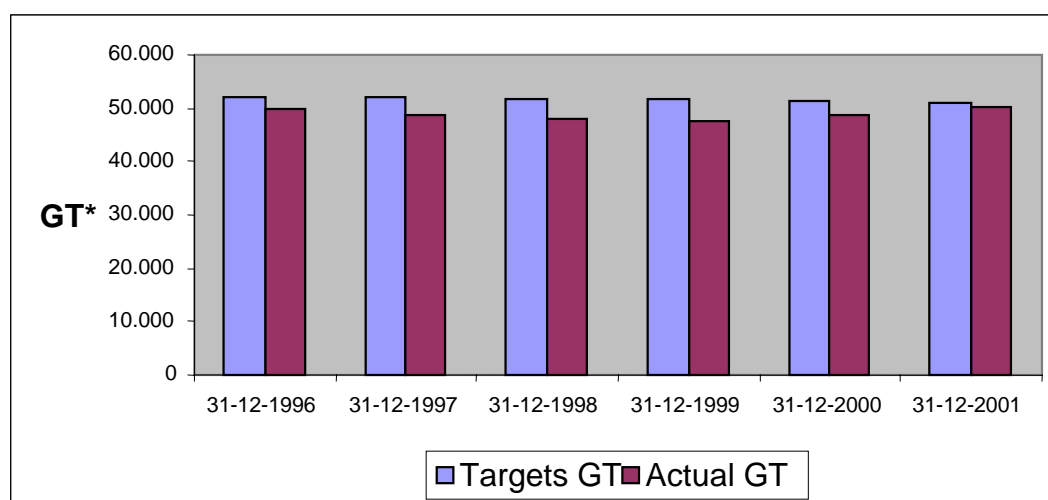
Segment	Description	Number of vessels	Situation 31.12.2001		Objective 31.12.2001		% Situation / Objective 31.12.2001	
			GT*	kW	GT*	kW	GT*	kW
4M1	Small-scale coastal fishing vessels <12 m	1.470	5.655	73.200	7.974	92.328	70,9%	79,3%
4M2	Trawlers	69	5.489	22.261	5.496	23.044	99,9%	96,6%
4M3	Trawlers, purse seiners	134	24.276	80.702	23.256	83.586	104,4 %	96,5 %
4M4	Bottom trawlers	214	13.104	57.719	11.841	49.741	110,7 %	116,0 %
4M5	Passive gear vessels >12 m	54	1.463	8.332	2.330	11.884	62,8%	70,1%
4M6	Passive gear vessels >12 m	6	195	1.079	262	1.273	74,4%	84,8%
NC	Unclassified	1	1	9				
	TOTAL	1.948	50.183	243.302	51.159	261.856	98,1%	92,9%

Bold italic type indicates that the targets have not been met. It should be noted that the tonnage targets have not been revised to take into account the remeasurement in units of GT, so the comparisons between the situation and the targets are uncertain.

(b) Fleet evolution

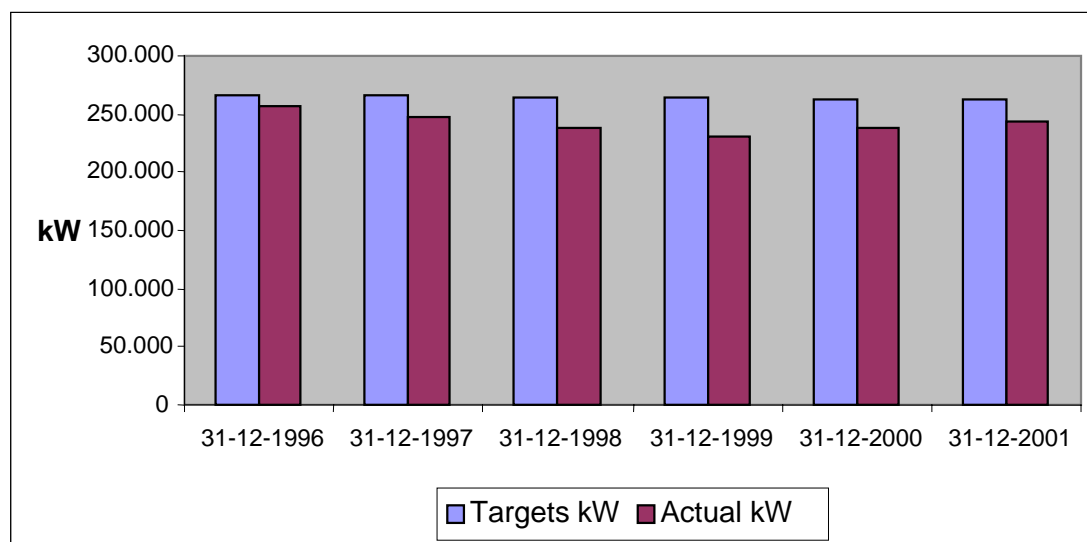
Evolution of global fleet capacity in GT compared to targets.*

Sweden



Evolution of global fleet capacity in kW compared to targets.

Sweden



(c) Fishing effort

Sweden

Segment code	Fishery	1997		1998		1999		2000		2001	
		GT days	kW days	GT days	kW days	GT days	kW days	GT days	kW days	GT days	kW days
4M1						549	6.833				
4M2		931	3.849	825	3.391	812	3.251	955	3.725	753	2.935
4M3		3.606	11.165	4.214	12.498	4.229	12.315	4.809	13.976	4.748	14.298
4M4	F1	2.209	8.595	1.689	6.999	2.111	8.254	2.152	8.231	1.957	7.831
4M5						195	1.140				
4M6						37	208				

units in '000 GT days and '000 kW days

(d) Cumulative fishing effort for segments subject to a system for the management of fishing effort

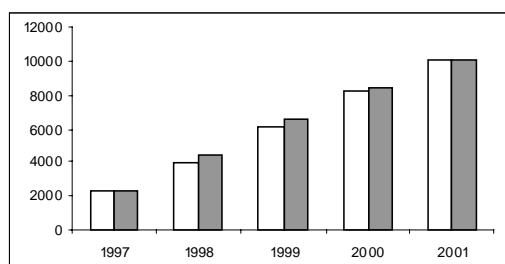
Sweden

Segment code	Fishery	End 1997		End 1998		End 1999		End 2000		End 2001	
		GT –	kW –	GT –	kW –	GT –	kW –	GT –	kW –	GT –	kW –
		days	days	days	days	days	days	days	days	days	days
4M4	F1	2.209	8.595	3.897	15.594	6.009	23.848	8.161	32.078	10.118	39.909

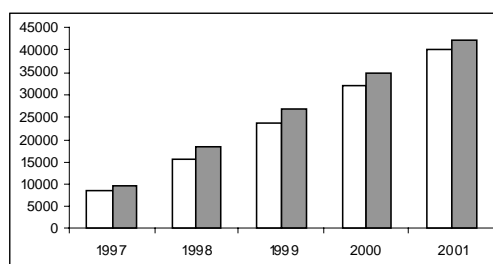
units in '000 GT days and '000 kW days

Sweden - 4M4 Bottom trawlers

GT days ('000)



kW days ('000)



CONCLUSION

At the end of the first five years of the MAGP IV, the Community fleet has been reduced by 38 078 GT and 460 042 kW, representing reductions in fleet capacity of approximately 1.9% and 5.9% respectively. The decrease in tonnage has been under-estimated due to the progressive remeasurement of the fleet. At 31 December 2001 the Community fleet had over-fulfilled the final MAGP IV targets by around 16% in terms of tonnage and 12% in terms of power.

Several Member States have failed to meet their targets in a few segments. In some segments capacity has even risen substantially beyond the MAGP target levels.

As well as providing information, the aim of this report is to allow the Member States and the Commission to take steps to remedy the situation where required, to halt public aid schemes where necessary and to launch infringement proceedings.